

Digital Art

INSTRUCTIONS

- 1 [Saving Black & White Figures
As Monochrome TIFF
As EPS](#)
- 2 [Saving Color Figures
As Monochrome TIFF
As EPS](#)



Instructions for Preparing Digital Artwork
for Submission to CPC using
ChemDraw Pro 5.0 for Windows

PLEASE NOTE

*When creating graphics in graphing programs such as **ChemDraw Pro** with the intention of outputting to an imagesetter or platesetter, it is extremely important that the person creating the illustration have a thorough understanding of the details of imaging in a prepress environment. There are an abundance of complex problems that can occur at output if paths are set up improperly, colors are indicated incorrectly, or other elements are constructed improperly. Trapping issues can also present problems if not addressed. The more complicated your illustration becomes, the greater the probability of problems at output, and therefore the need for more expertise and experience in creating the files.*

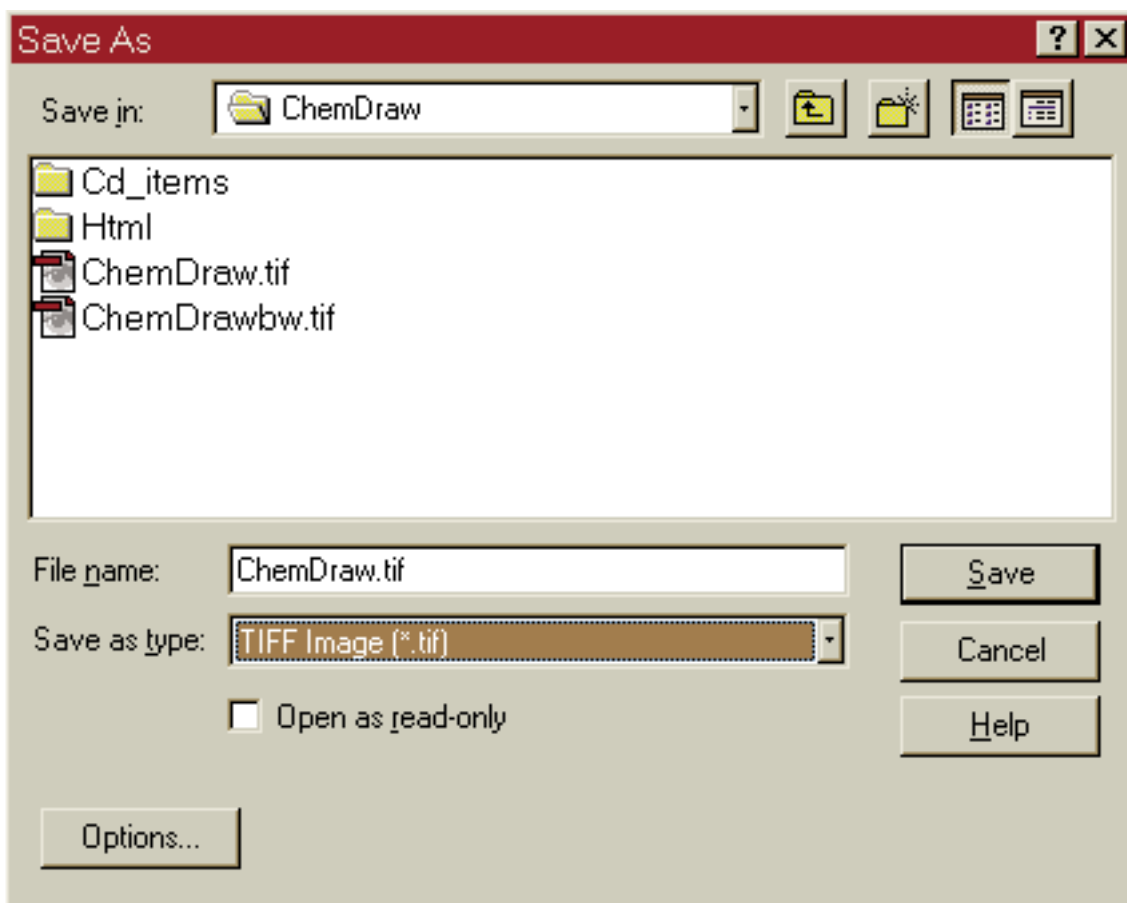
Saving Black & White Figures

As Monochrome TIFF

NOTE

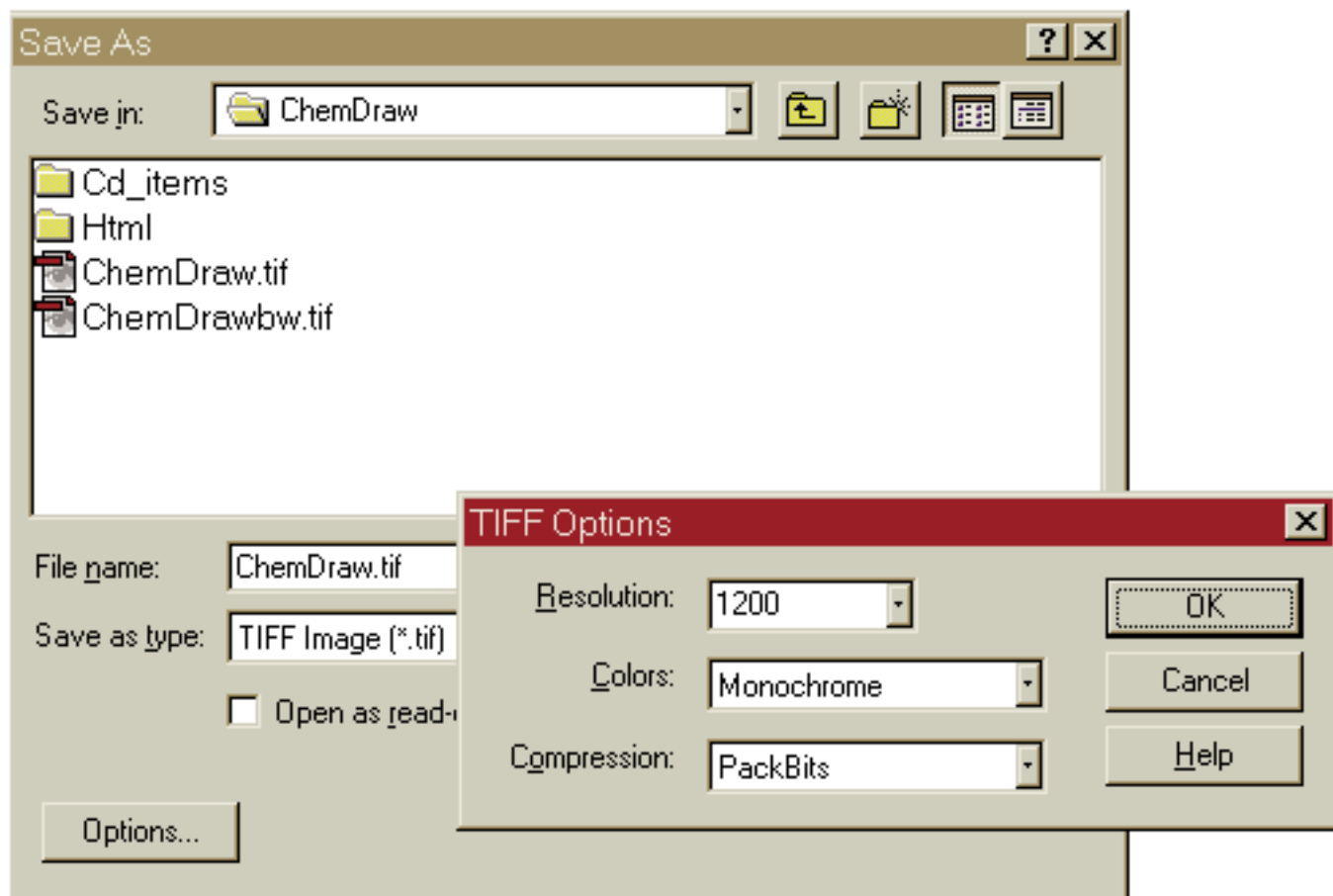
When exporting figures to be printed as pure black & white (line art), do not use objects with gray shading. ChemDraw has problems rendering shades of gray as pure black and white (Monochrome TIFF format).

- 1. Create the graphic.** Create the figure at 100% of print size so that no scaling is necessary.
- 2. Choose Save As.** After creating the graphic, choose **Save As (File > Save As)** from the ChemDraw Pro file menu. After the Save As dialog box appears (shown below), select **TIFF Image (*.tif)** as the Save as type.



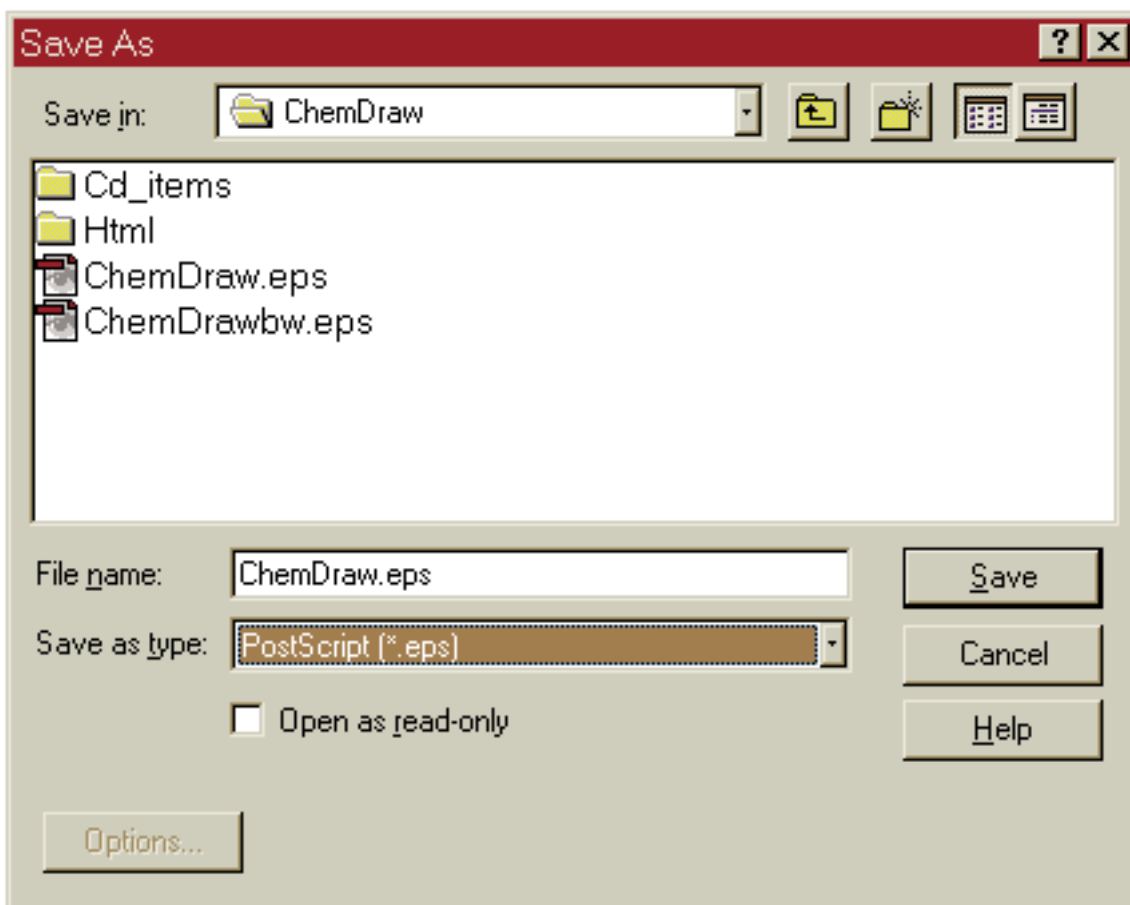
3. Next press the **Options** button to choose the appropriate TIFF options.

- **Resolution:** choose 1200 dpi
- **Colors:** choose Monochrome
- **Compression:** choose PackBits
- Press OK



As EPS (the EPS format will create smaller files than Monochrome TIFF)

1. **Create the graphic.** Create the figure at 100% of print size so that no scaling is necessary.
2. **Choose Save As.** After creating the graphic, choose **Save As (File > Save As)** from the ChemDraw Pro file menu. After the Save As dialog box appears (shown below), select **PostScript (*.eps)** as the Save as type. Press **Save** to save the file.



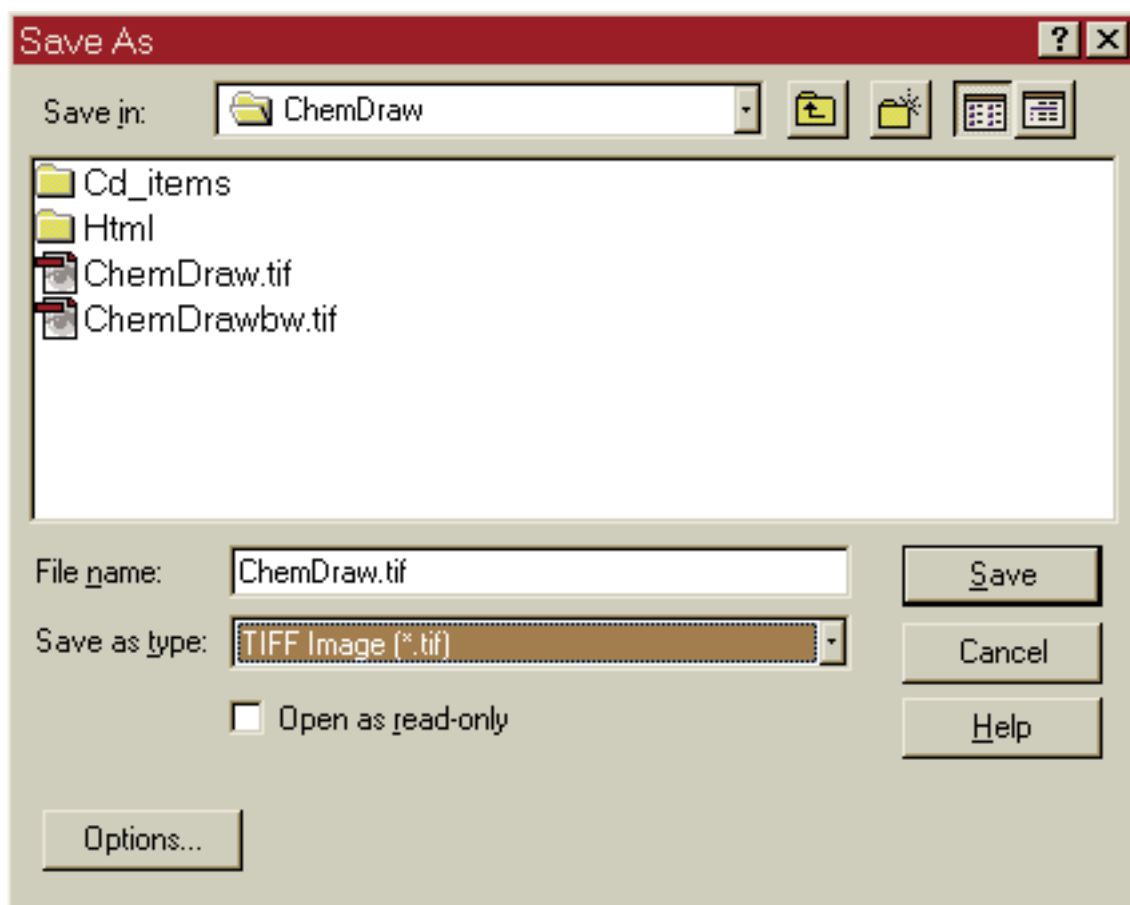
NOTE

When exporting figures in EPS format only use CPC supported Type 1 printer fonts.

Saving Color Figures

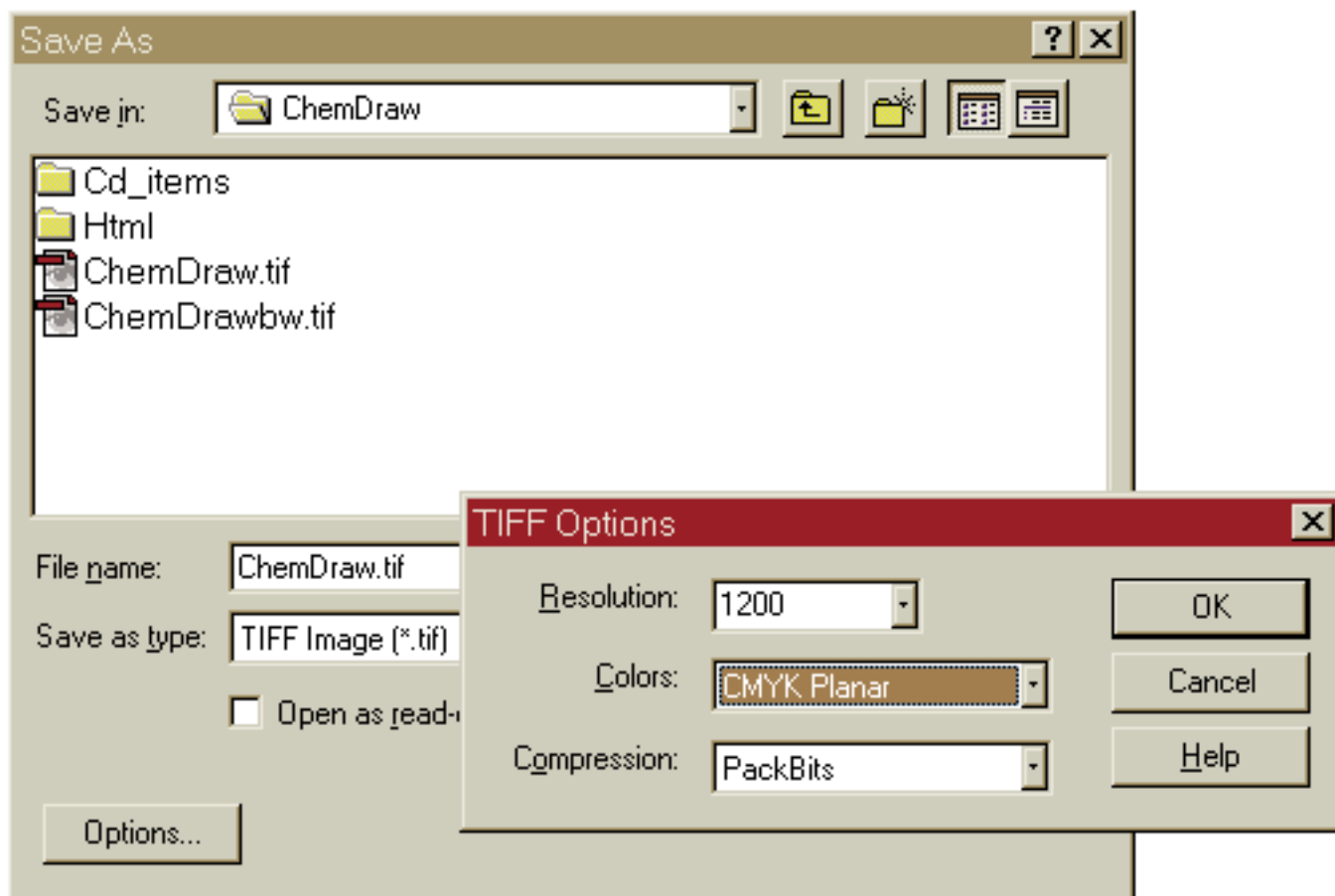
As CMYK TIFF

- 1. Create the graphic.** Create the figure at 100% of print size so that no scaling is necessary.
- 2. Choose Save As.** After creating the graphic, choose **Save As (File > Save As)** from the ChemDraw Pro file menu. After the Save As dialog box appears (shown below), select **TIFF Image (*.tif)** as the Save as type.



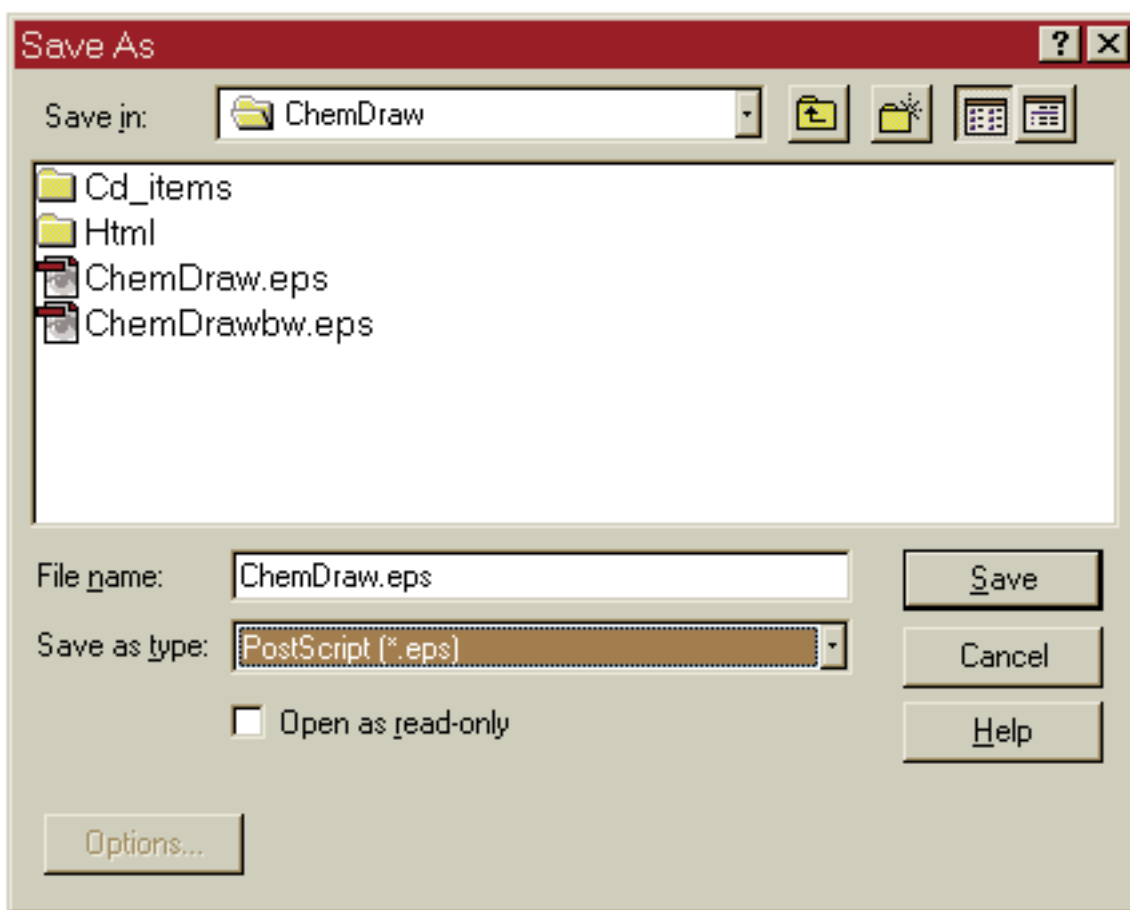
3. Next press the **Options** button to choose the appropriate TIFF options.

- **Resolution:** choose 1200 dpi
- **Colors:** choose CMYK Planar
- **Compression:** choose PackBits
- Press OK



As EPS (the EPS format will create smaller files than CMYK TIFF)

1. **Create the graphic.** Create the figure at 100% of print size so that no scaling is necessary.
2. **Choose Save As.** After creating the graphic, choose **Save As (File > Save As)** from the ChemDraw Pro file menu. After the Save As dialog box appears (shown below), select **PostScript (*.eps)** as the Save as type. Press **Save** to save the file.



NOTE

When exporting figures in EPS format only use CPC supported Type 1 printer fonts.

Please refer any additional questions to this e-mail address: digitalart@cadmus.com
or visit our web site to find instructions on another application.
Web address: <http://cpc.cadmus.com/da/>