

## I N S T R U C T I O N S

- 1 [Saving Color Figures](#)
- 2 [Saving Grayscale Figures](#)
- 3 [Saving Monochrome Figures](#)

# Digital Art



Instructions for Preparing Digital Artwork  
for Submission to CPC using  
Corel Photo-Paint for Macintosh

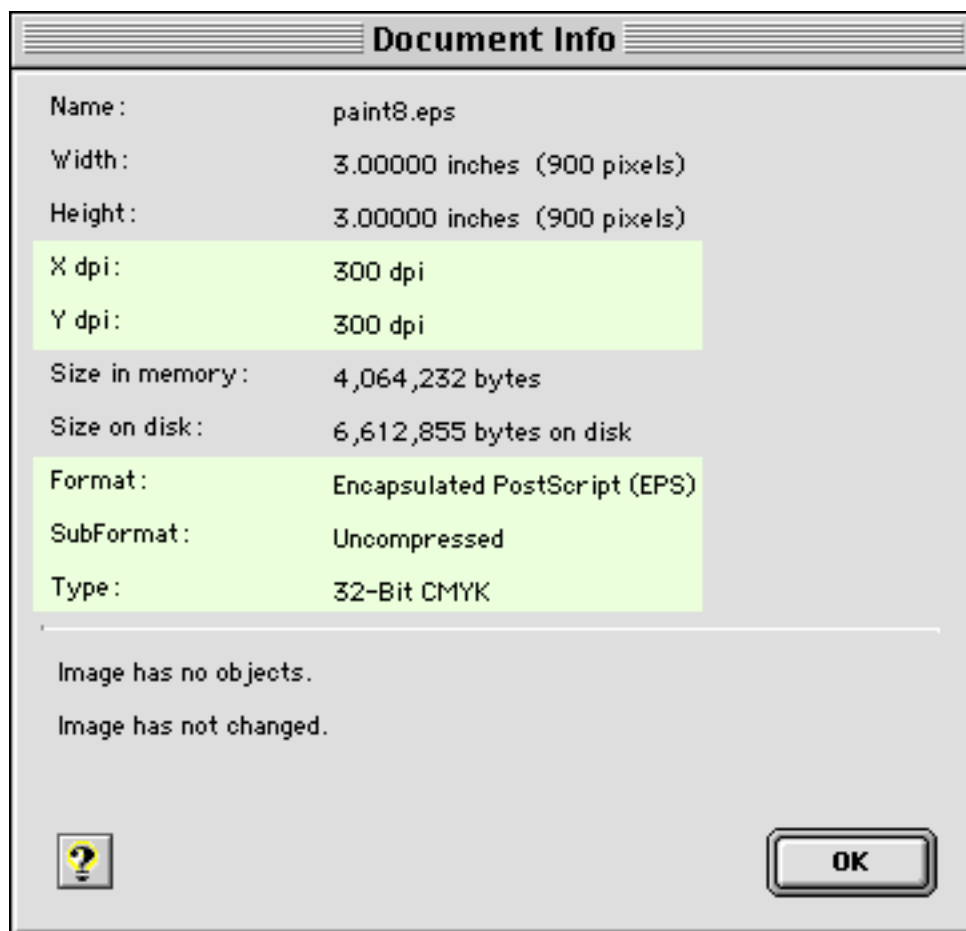
## PLEASE NOTE

---

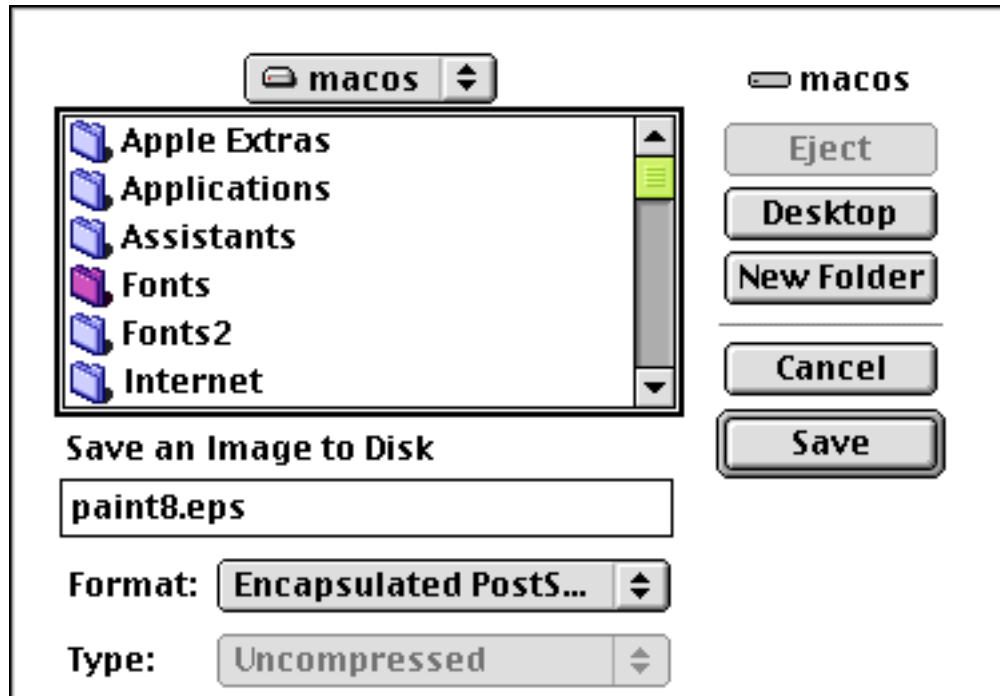
When creating graphics in image editing programs such as *Corel Photo-Paint* with the intention of outputting to an imagesetter or platesetter, it is extremely important that the person creating the illustration have a thorough understanding of the details of imaging in a prepress environment. The more complicated your illustration becomes, the greater the probability of problems at output, and therefore the need for more expertise and experience in creating the files.

# Saving Color Figures

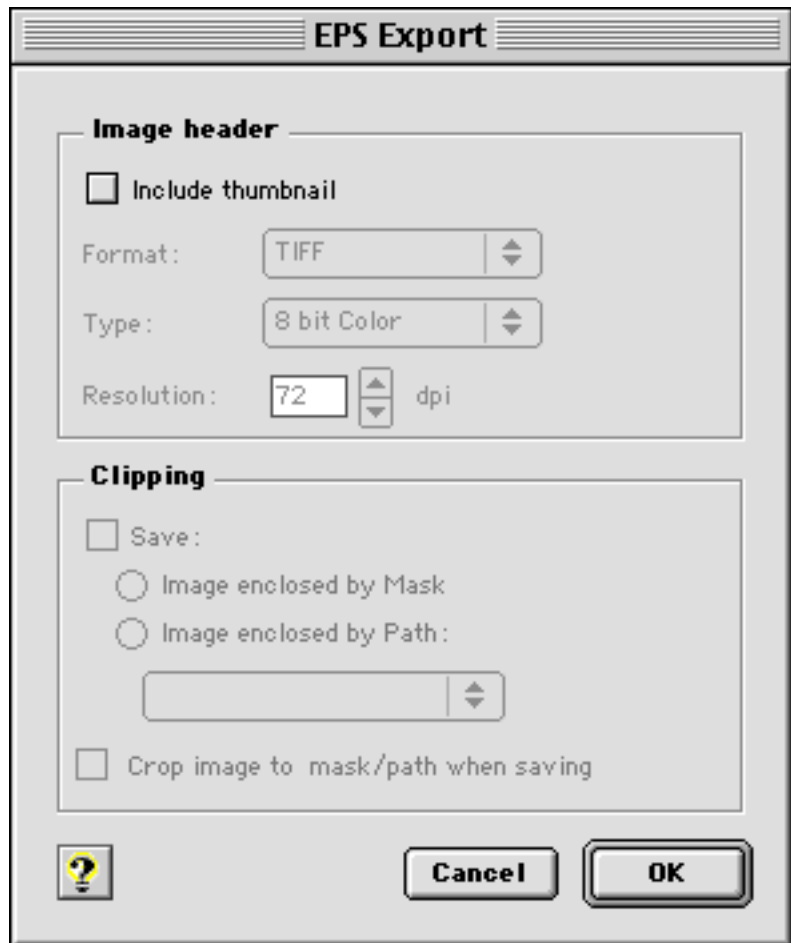
1. **Open the image in Photo-Paint.**
2. **Do all cropping, tooling, and editing.** Make sure all images are cropped closely (i.e., no excess "white space"), cleaned, and that you have removed dust, scratches, and tape marks. Print out a laser proof (or color proof if possible) of the figure and check it over before sending it to CPC.
3. **Check the image for proper Resolution, Format and Type.** Choose File-> Document Info.
  - **Verify that the resolution is correct (File -> Document Info).** For four-color figures the resolution should be between 269 and 320 dpi. The resolution is specified by the **X dpi** and **Y dpi** as shown below.
  - **Verify the Format and SubFormat are correct.** The **Format** for four-color figures should be **Encapsulated PostScript (EPS)** and the **SubFormat** should be **Uncompressed**.
  - **Verify that the image Type is correct.** For four-color figures the **Type** should be **32-bit CMYK** as shown below. Note: If necessary choose **Image-> Convert to->** to change the image Type.



4. **Save the file.** Save the files using the **Save As** command (**File -> Save As**) and choose the Save as type: **Encapsulated PostScript (EPS)** as shown below.

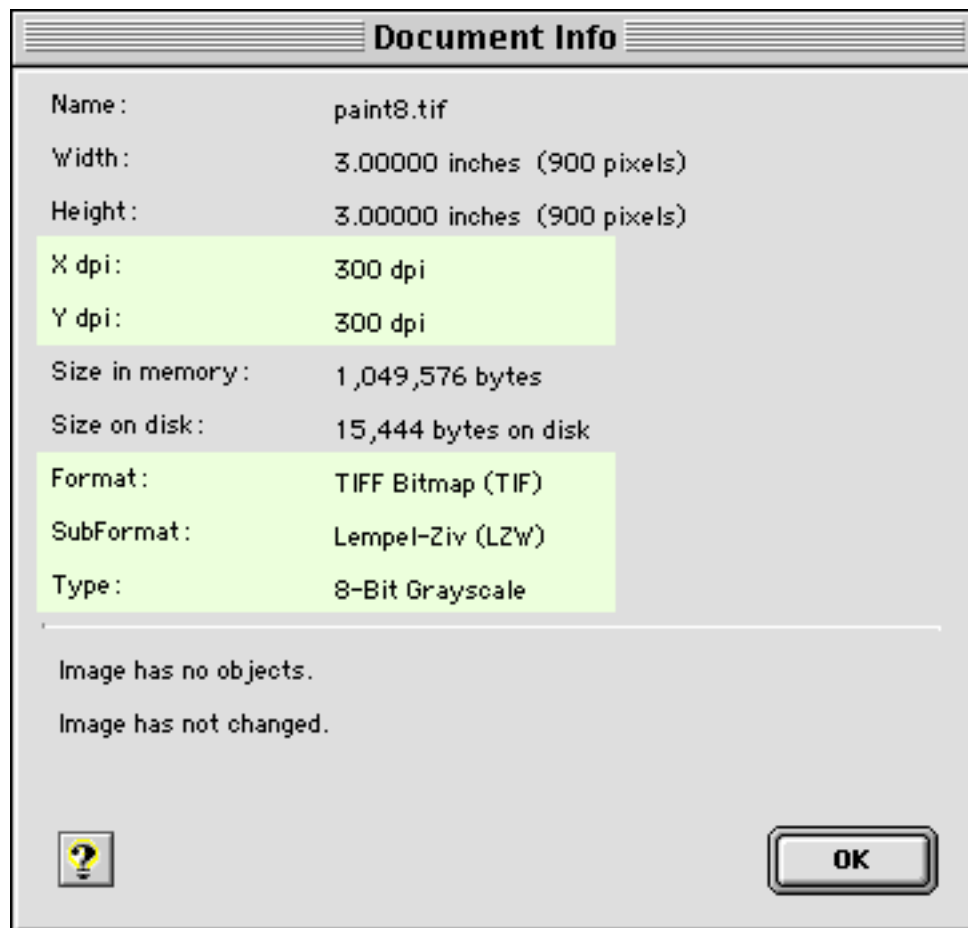


5. **EPS Export Options.** Next, the EPS Export dialog box will show. Deselect Include header and any other options in this box and press OK.

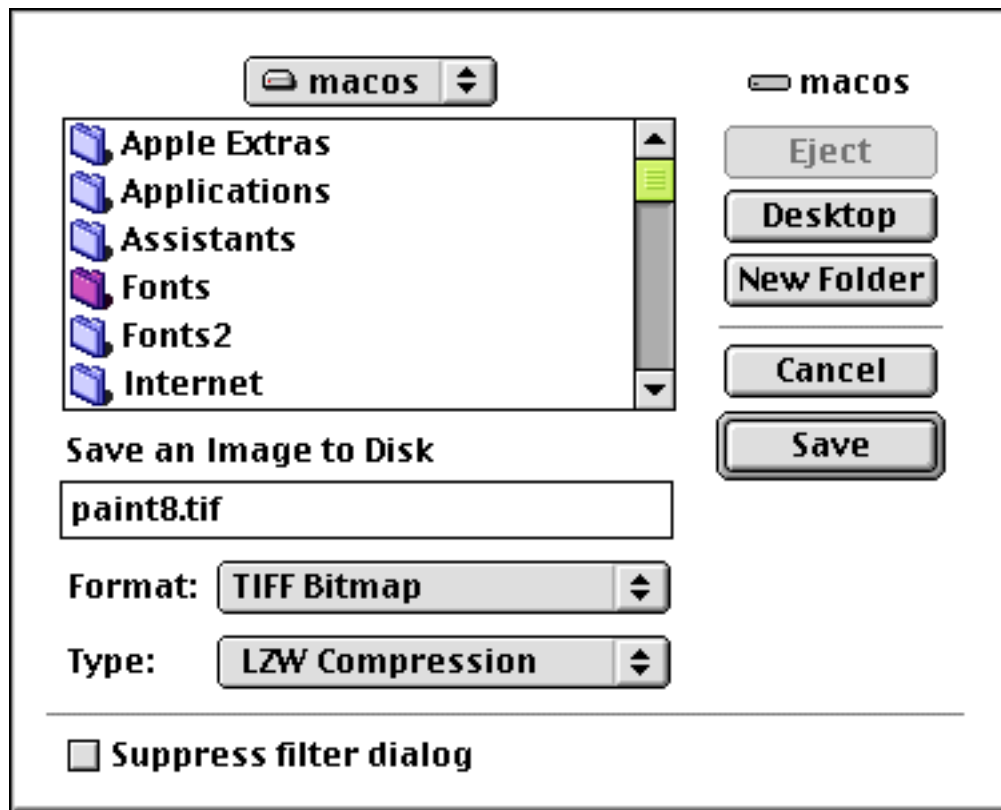


## Saving Grayscale Figures

1. **Open the image in Photo-Paint.**
2. **Do all cropping, tooling, and editing.** Make sure all images are cropped closely (i.e., no excess "white space"), cleaned, and that you have removed dust, scratches, and tape marks. Print out a laser proof of the figure and check it over before sending it to CPC.
3. **Check the image for proper Resolution, Format and Type.** Choose File-> Document Info.
  - **Verify that the resolution is correct (File -> Document Info).** For Grayscale figures the resolution should 300 dpi. The resolution is specified by the **X dpi** and **Y dpi** as shown below. Grayscale figures with halftone images and type are considered to be **combination halftones**. If you plan to add type to your halftone scan using Photo-Paint, the resolution should be **600 ppi** (pixels per inch).
  - **Verify the Format and SubFormat are correct.** The **Format** for Grayscale figures should be **TIFF Bitmap (TIF)** and the **SubFormat** should be **Lempel-Ziv (LZW)**.
  - **Verify that the image Type is correct.** For Grayscale figures the **Type** should be **8-bit Grayscale** as shown below. **Note:** If necessary choose **Image-> Convert to->** to change the image Type.

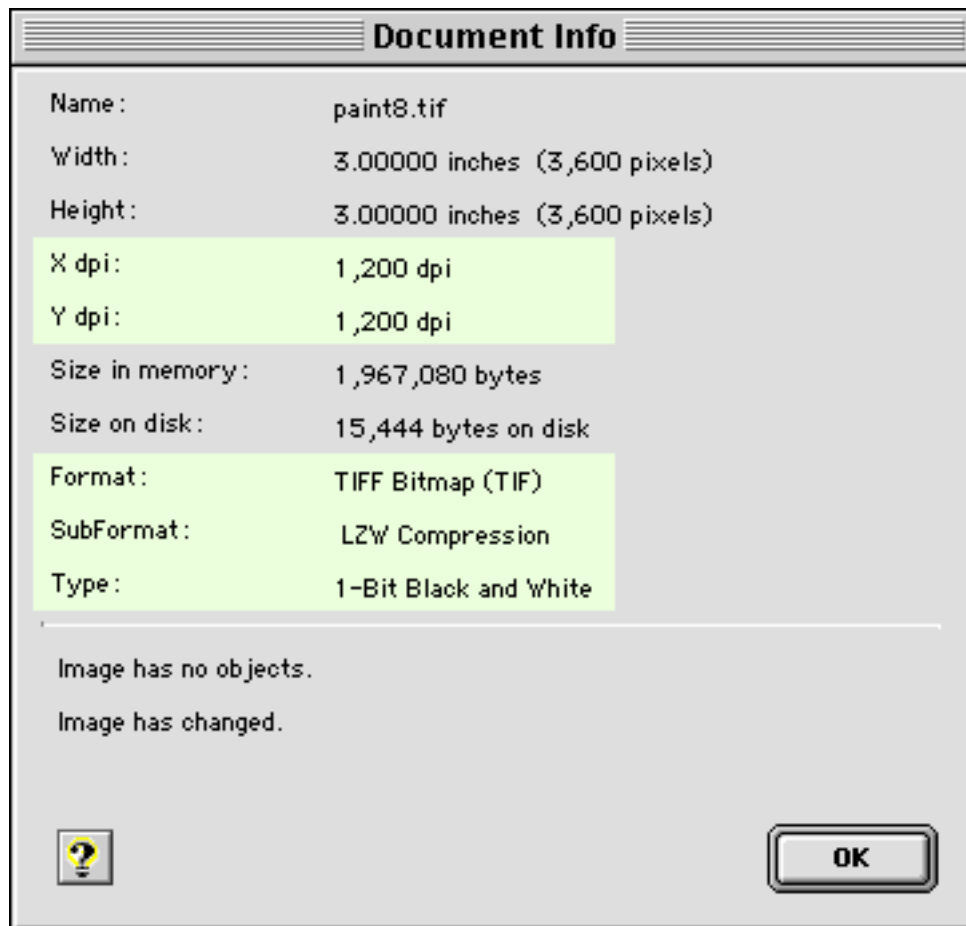


4. **Save the file.** Save the files using the Save As command (**File -> Save As**) and choose the Save as type: **TIFF Bitmap (TIF)** as shown below. To produce smaller files use LZW Compression for the Compression type.

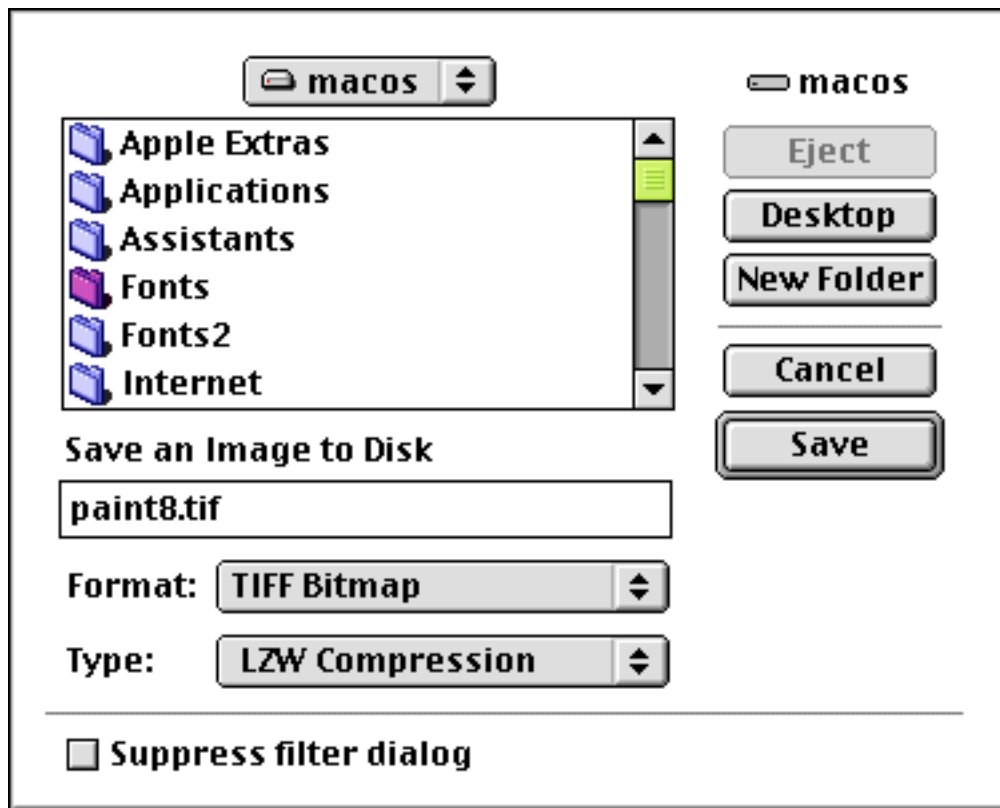


# Saving Monochrome Figures

1. **Open the image in Photo-Paint.**
2. **Do all cropping, tooling, and editing.** Make sure all images are cropped closely (i.e., no excess "white space"), cleaned, and that you have removed dust, scratches, and tape marks. Print out a laser proof of the figure and check it over before sending it to CPC.
3. **Check the image for proper Resolution, Format and Type.** Choose File-> Document Info.
  - **Verify that the resolution is correct (File -> Document Info).** For monochrome figures the resolution should be **1200 dpi**. The resolution is specified by the **X dpi** and **Y dpi** as shown below.
  - **Verify the Format and SubFormat are correct.** The **Format** for monochrome figures should be **TIFF Bitmap (TIF)** and the **SubFormat** should be **Lempel-Ziv (LZW)**.
  - **Verify that the image Type is correct.** For monochrome figures the **Type** should be **1-bit Black and White** as shown below. **Note:** If necessary choose **Image-> Convert to->** to change the image Type.



4. **Save the file.** Save the files using the Save As command (**File -> Save As**) and choose the Save as type: **TIFF Bitmap (TIF)** as shown below. To produce smaller files use LZW Compression for the Compression type.



Please refer any additional questions to this e-mail address: [digitalart@cadmus.com](mailto:digitalart@cadmus.com)  
or visit our website to find instructions on another application.  
Web address: <http://cjs.cadmus.com/da/>