

INSTRUCTIONS

- 1 [Saving Color Figures](#)
- 2 [Saving Grayscale Figures](#)
- 3 [Saving Monochrome Figures](#)

Digital Art



Instructions for Preparing Digital Artwork
for Submission to CPC using
Corel PHOTO-PAINT 9.0 for Windows

PLEASE NOTE

When creating graphics in image editing programs such as *Corel PHOTO-PAINT* with the intention of outputting to an imagesetter or platesetter, it is extremely important that the person creating the illustration have a thorough understanding of the details of imaging in a prepress environment. The more complicated your illustration becomes, the greater the probability of problems at output, and therefore the need for more expertise and experience in creating the files.

Saving Color Figures

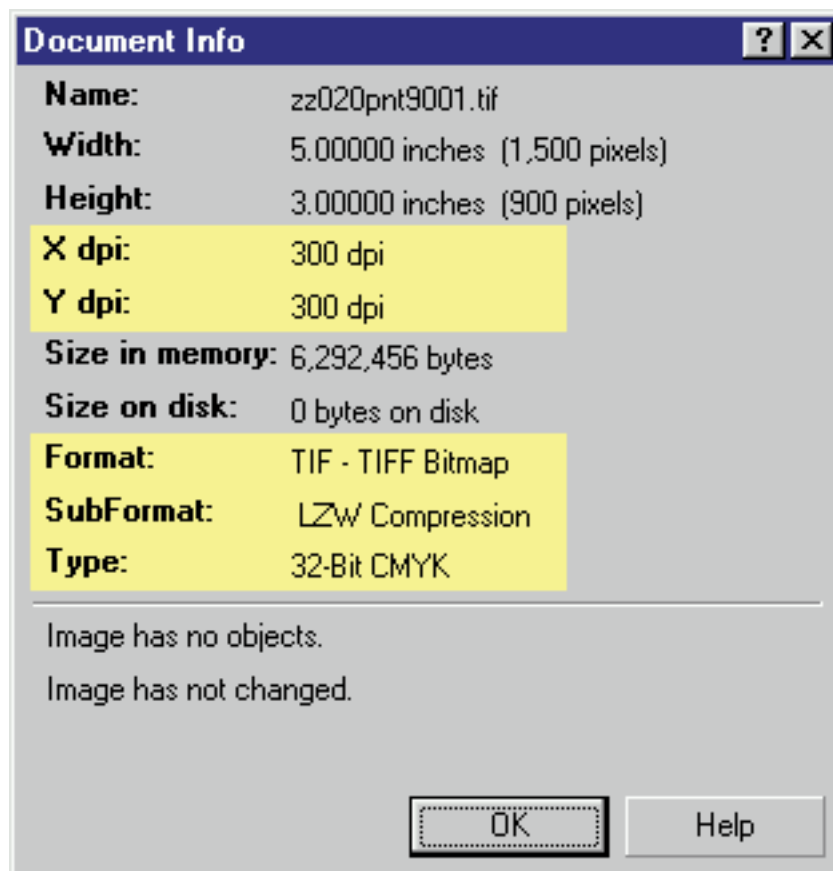
1. Open the image in Photo-Paint.

2. Do all cropping, tooling, and editing. Make sure all images are cropped closely (i.e., no excess “white space”), cleaned, and that you have removed dust, scratches, and tape marks. Print out a laser proof (or color proof if possible) of the figure and check it over before sending it to CPC.

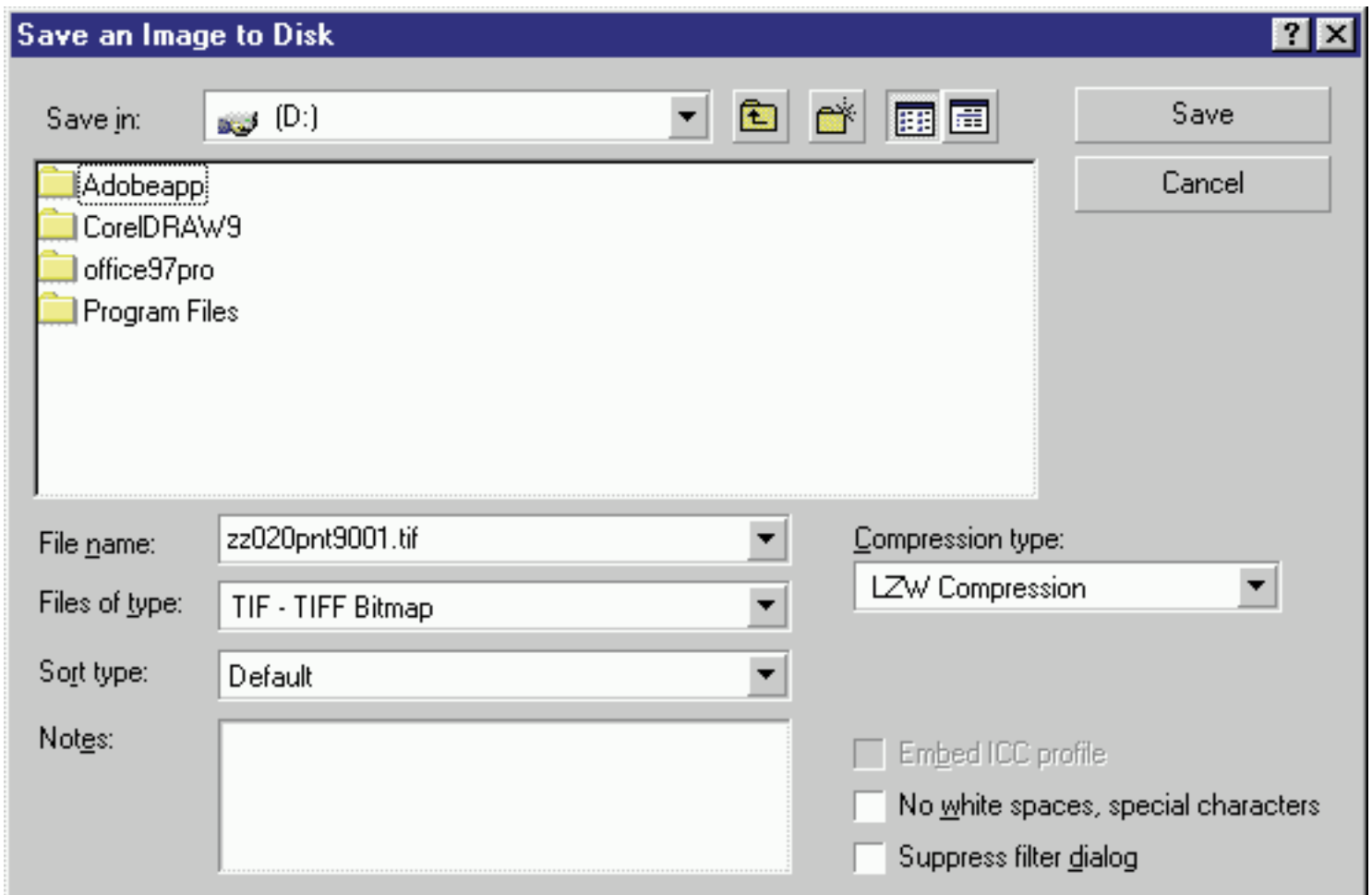
3. Check the image for proper Resolution, Format and Type.

Choose File-> Document Info.

- **Verify that the resolution is correct (File -> Document Info).** For four-color figures the resolution should be between 269 and 320 dpi. The resolution is specified by the X dpi and Y dpi as shown below.
- **Verify the Format and SubFormat are correct.** The **Format** for four-color figures should be **TIFF Bitmap (TIF)** and the **SubFormat** should be **Lempel-Ziv (LZW)**.
- **Verify that the image Type is correct.** For four-color figures the **Type** should be **32-bit CMYK** as shown below. **Note:** If necessary choose **Image-> Convert to->** to change the image Type.

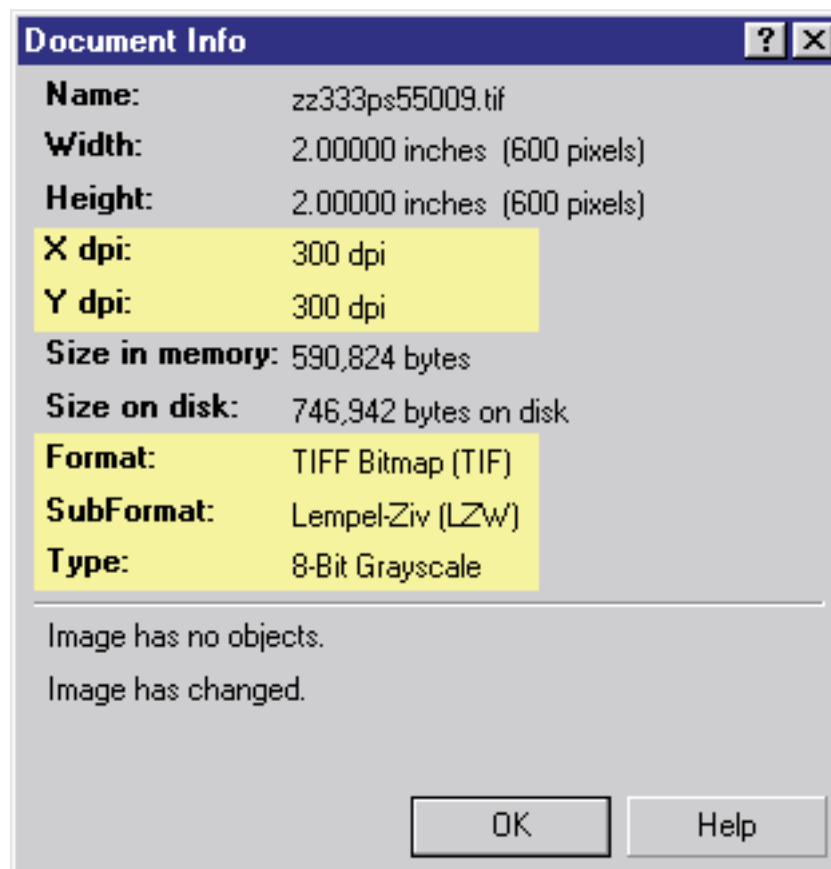


4. **Save the file.** Save the files using the **Save As** command (**File -> Save As**) and choose the **Files of type: TIF-TIFF Bitmap** as shown below.

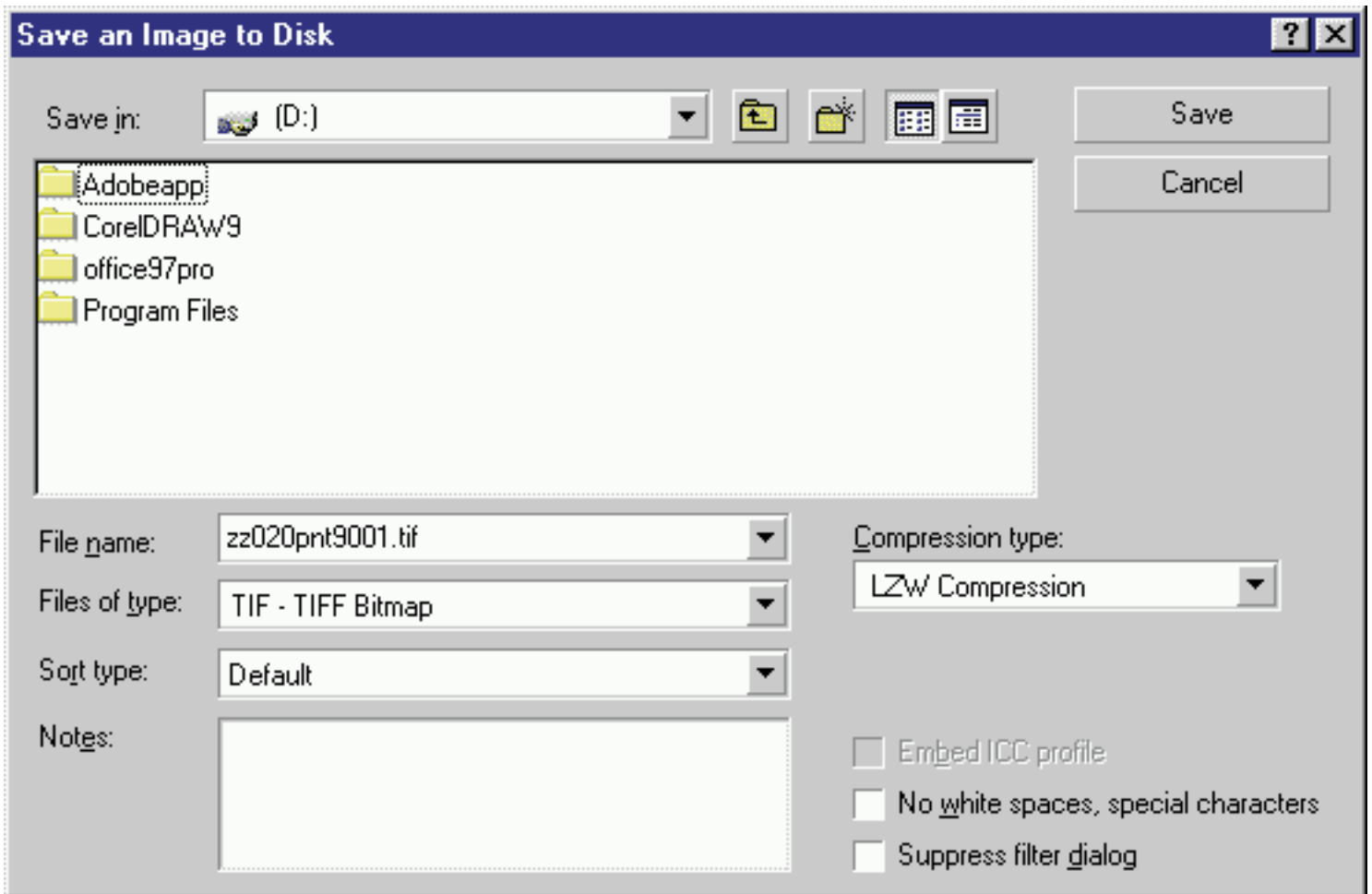


Saving Grayscale Figures

1. **Open the image in Photo-Paint.**
2. **Do all cropping, tooling, and editing.** Make sure all images are cropped closely (i.e., no excess "white space"), cleaned, and that you have removed dust, scratches, and tape marks. Print out a laser proof of the figure and check it over before sending it to CPC.
3. **Check the image for proper Resolution, Format and Type.**
Choose File-> Document Info.
 - **Verify that the resolution is correct (File -> Document Info).** For Grayscale figures the resolution should be 300 dpi. The resolution is specified by the **X dpi** and **Y dpi** as shown below. Grayscale figures with halftone images and type are considered to be **combination halftones**. If you plan to add type to your halftone scan using Photo-Paint, the resolution should be **600 ppi** (pixels per inch).
 - **Verify the Format and SubFormat are correct.** The **Format** for Grayscale figures should be **TIFF Bitmap (TIF)** and the **SubFormat** should be **Lempel-Ziv (LZW)**.
 - **Verify that the image Type is correct.** For Grayscale figures the **Type** should be **8-bit Grayscale** as shown below. **Note:** If necessary choose **Image-> Convert to->** to change the image Type.



4. **Save the file.** Save the files using the **Save As** command (**File -> Save As**) and choose the **Files of type: TIF-TIFF Bitmap** as shown below. To produce smaller files use LZW Compression for the Compression type.



Saving Monochrome Figures

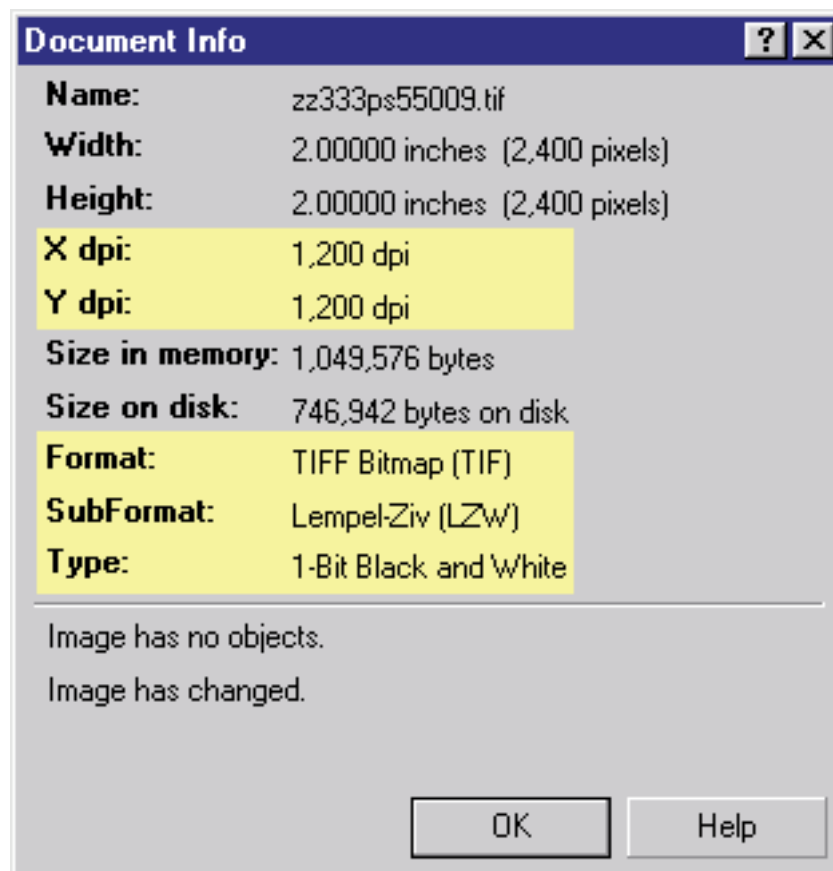
1. Open the image in Photo-Paint.

2. **Do all cropping, tooling, and editing.** Make sure all images are cropped closely (i.e., no excess "white space"), cleaned, and that you have removed dust, scratches, and tape marks. Print out a laser proof of the figure and check it over before sending it to CPC.

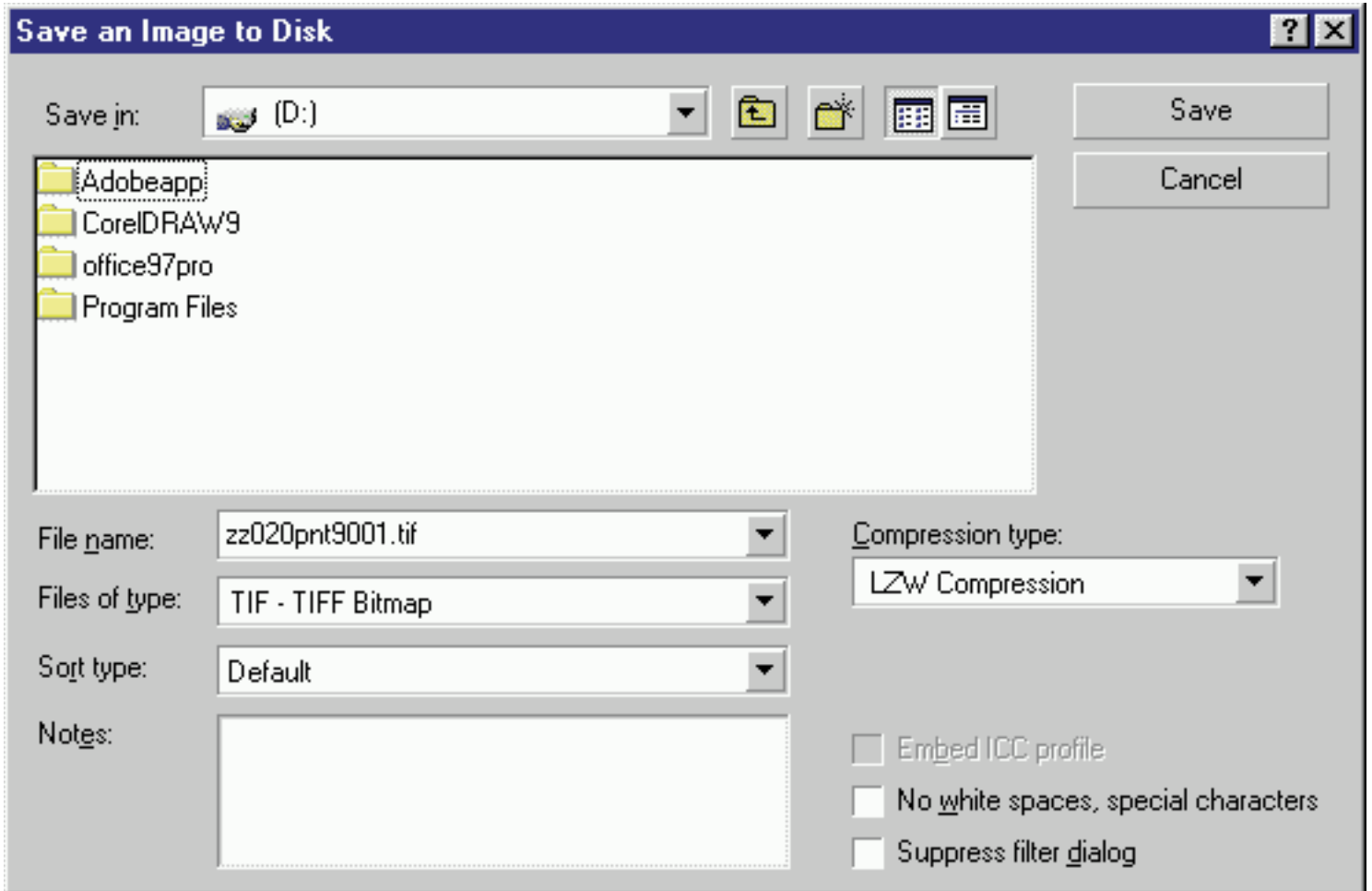
3. Check the image for proper Resolution, Format and Type.

Choose File-> Document Info.

- **Verify that the resolution is correct (File -> Document Info).** For monochrome figures the resolution should be 1200 dpi. The resolution is specified by the **X dpi** and **Y dpi** as shown below.
- **Verify the Format and SubFormat are correct.** The **Format** for monochrome figures should be **TIFF Bitmap (TIF)** and the **SubFormat** should be **Lempel-Ziv (LZW)**.
- **Verify that the image Type is correct.** For monochrome figures the **Type** should be **1-bit Black and White** as shown below. **Note:** If necessary choose **Image-> Convert to->** to change the image Type.



- 4. Save the file.** Save the files using the **Save As** command (**File -> Save As**) and choose the **Files of type: TIF-TIFF Bitmap** as shown below. To produce smaller files use LZW Compression for the Compression type.



Please refer any additional questions to this e-mail address: digitalart@cadmus.com
or visit our website to find instructions on another application.

Web address: <http://cjs.cadmus.com/da/>