

I N S T R U C T I O N S

- 1 [Saving Color Figures](#)
- 2 [Saving Grayscale Figures](#)
- 3 [Saving Monochrome Figures](#)

# Digital Art



Instructions for Preparing Digital Artwork  
for Submission to CPC using  
Adobe Photoshop 5.5 for Windows

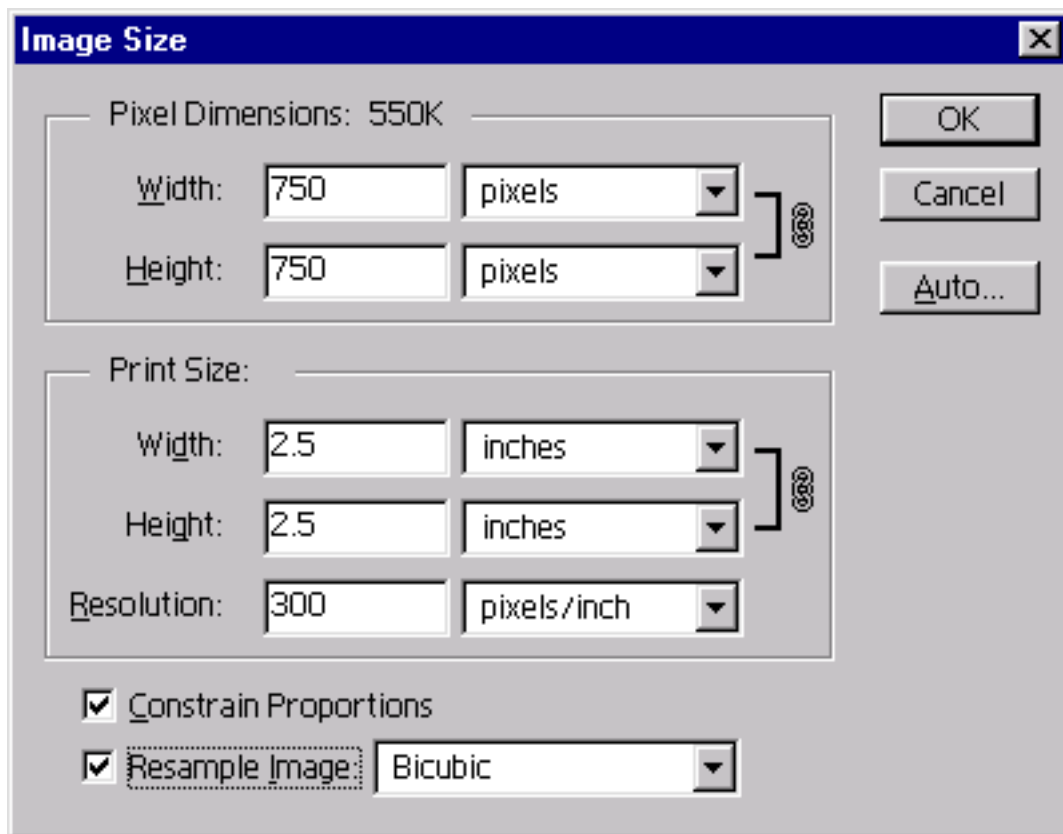
## PLEASE NOTE

---

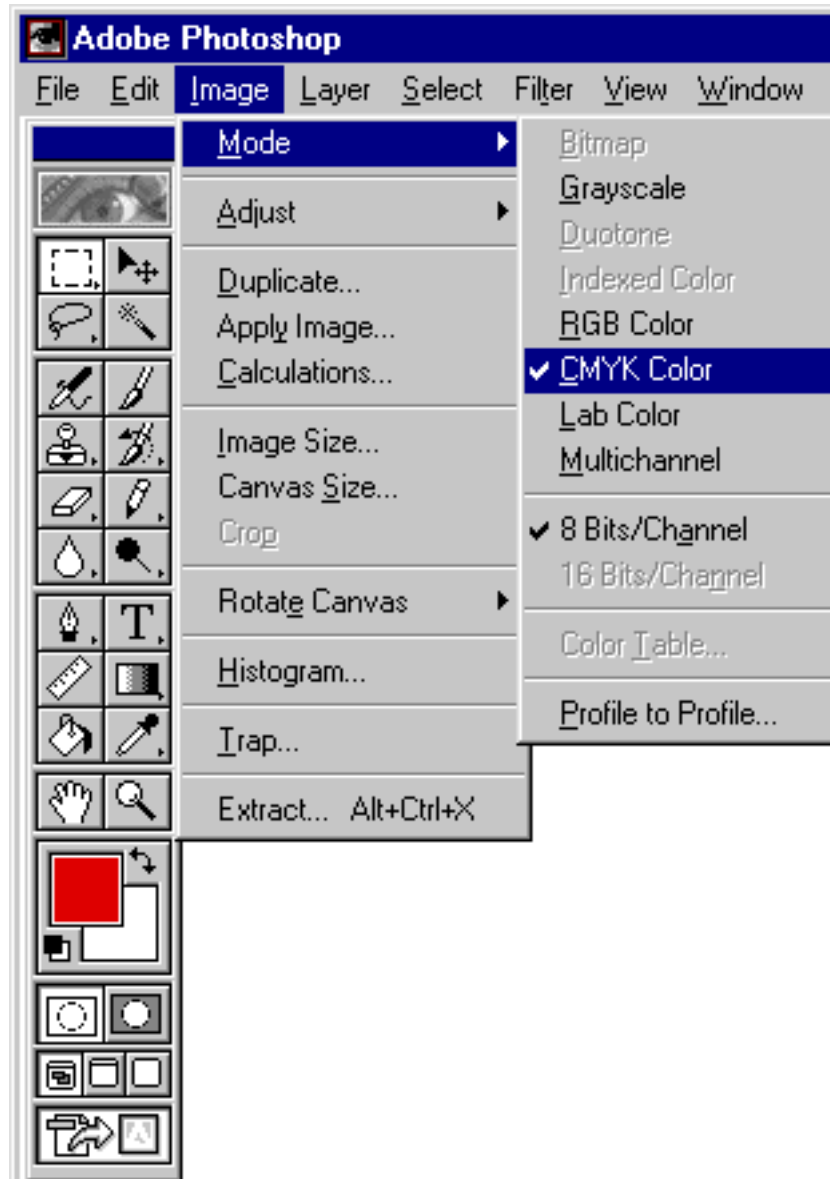
When creating graphics in image editing programs such as *Adobe Photoshop* with the intention of outputting to an imagesetter or platesetter, it is extremely important that the person creating the illustration have a thorough understanding of the details of imaging in a prepress environment. The more complicated your illustration becomes, the greater the probability of problems at output, and therefore the need for more expertise and experience in creating the files.

## Saving Color Figures

1. **Open the scanned graphic in Photoshop.**
2. **Verify that the resolution is correct (Image -> Image Size).** For color figures the resolution should be between 269 and 320 ppi (pixels per inch).

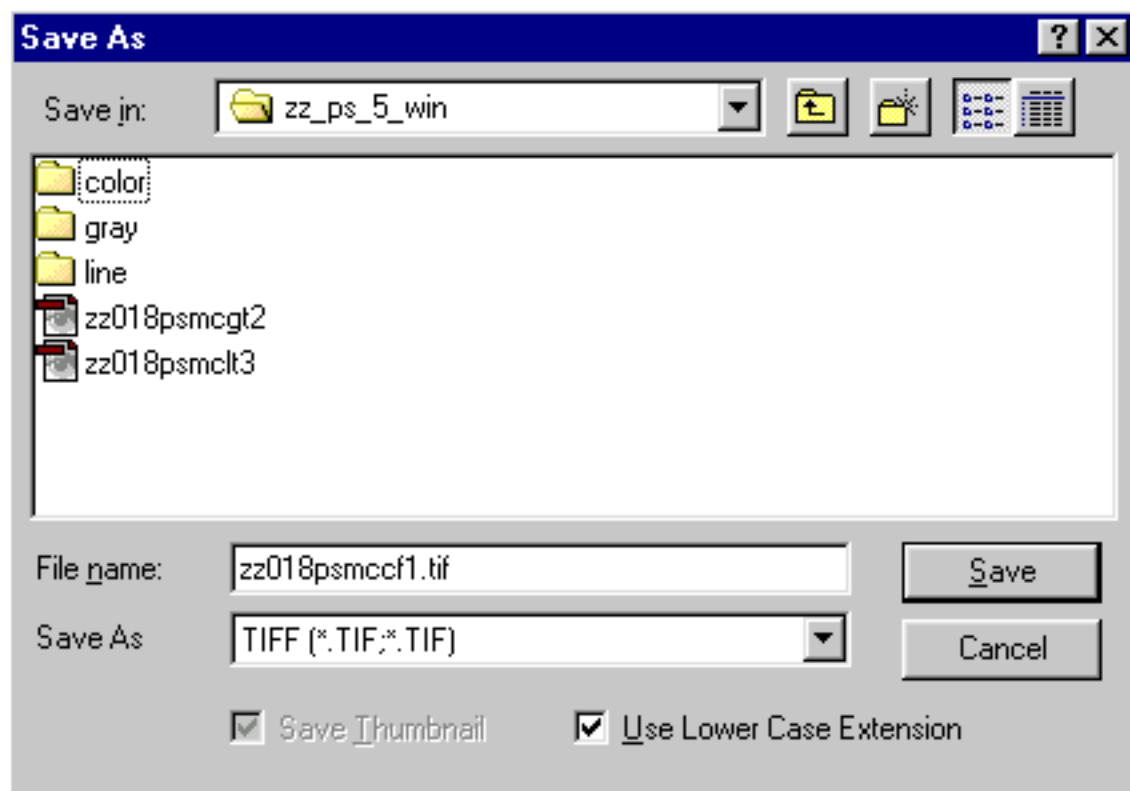


- 3. Verify that the mode is correct (Image -> Mode).** For color figures the mode should be CMYK.

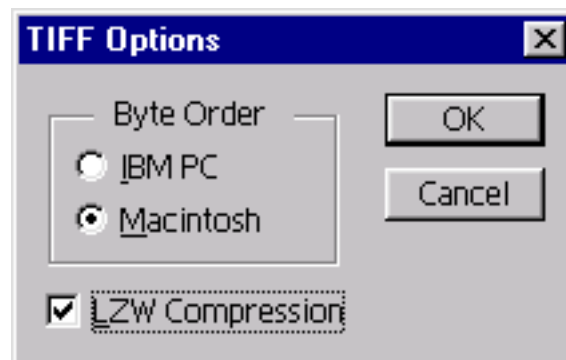


- 4. Do all cropping, tooling, and editing.** Make sure all images are cropped closely (i.e., no excess "white space"), cleaned, and that you have removed dust, scratches, and tape marks. Print out a laser proof (or color proof if possible) of the figure and check it over before sending it to CPC.

**5. Save the files using the Save As command (File -> Save As). Format: TIFF**

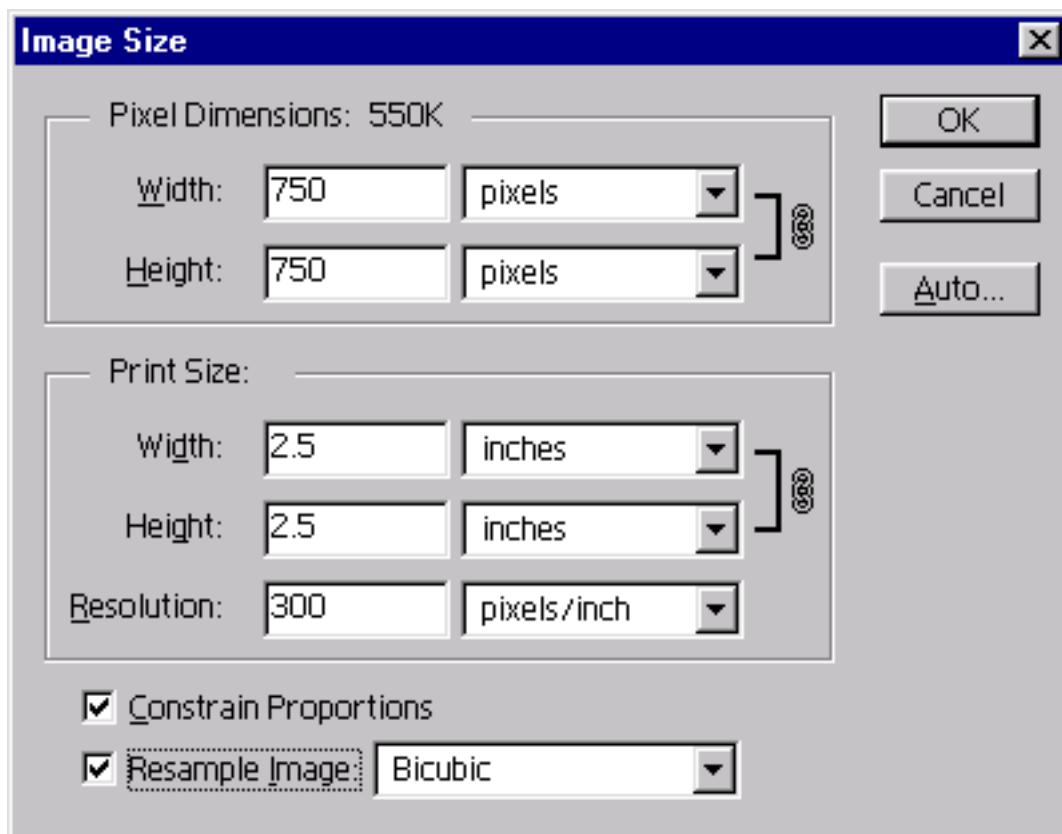


**6. Set the dialog box for TIFF Options as shown below:**

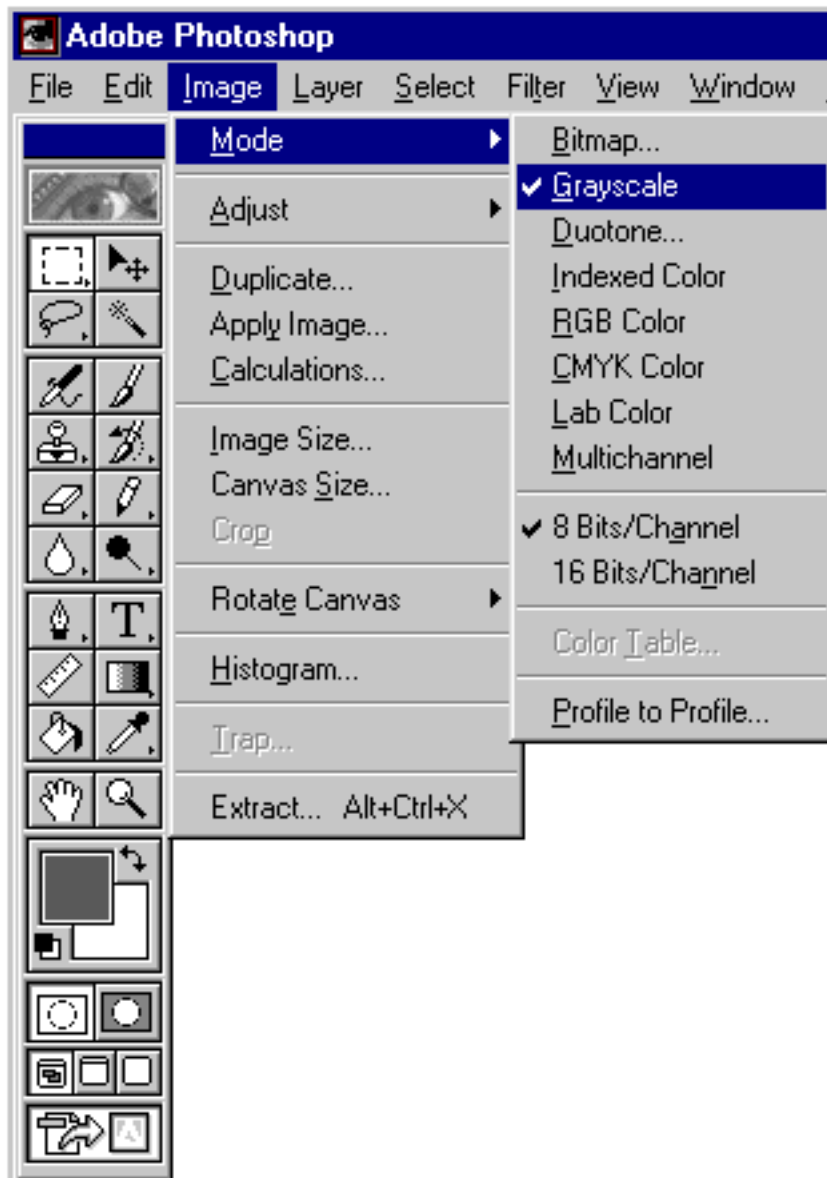


## Saving Grayscale Figures

1. **Open the scanned graphic in Photoshop.**
2. **Verify that the resolution is correct (Image -> Image Size).** For grayscale figures the resolution should be **300 ppi** (pixels per inch). Grayscale figures with halftone images and type are considered to be **combination halftones**. If you plan to add type to your halftone scan using Photoshop, the resolution should be **600 ppi** (pixels per inch).

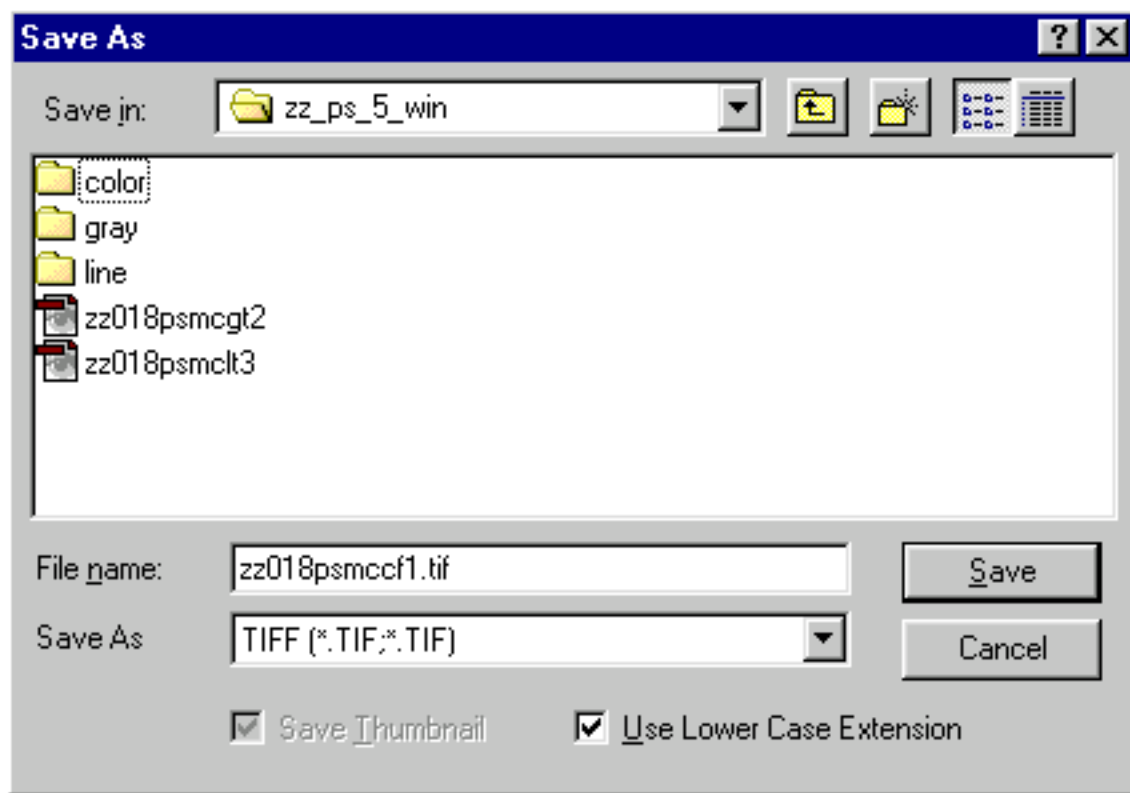


- 3. Verify that the mode is correct (Image -> Mode).** For grayscale figures the mode should be **Grayscale**.

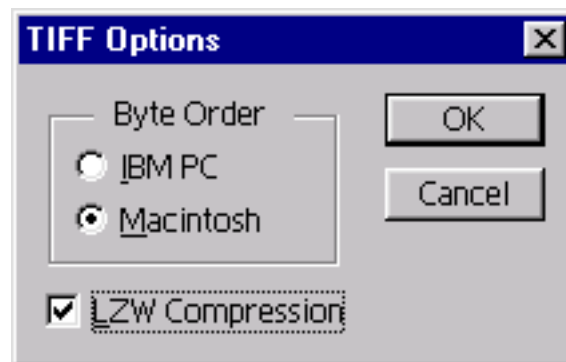


- 4. Do all cropping, tooling, and editing.** Make sure all images are cropped closely, cleaned, and that you have removed dust, scratches, and tape marks. Print out a laser proof of the figure and check it over before sending it to CPC.

**5. Save the files using the Save As command (File -> Save As). Format: TIFF**

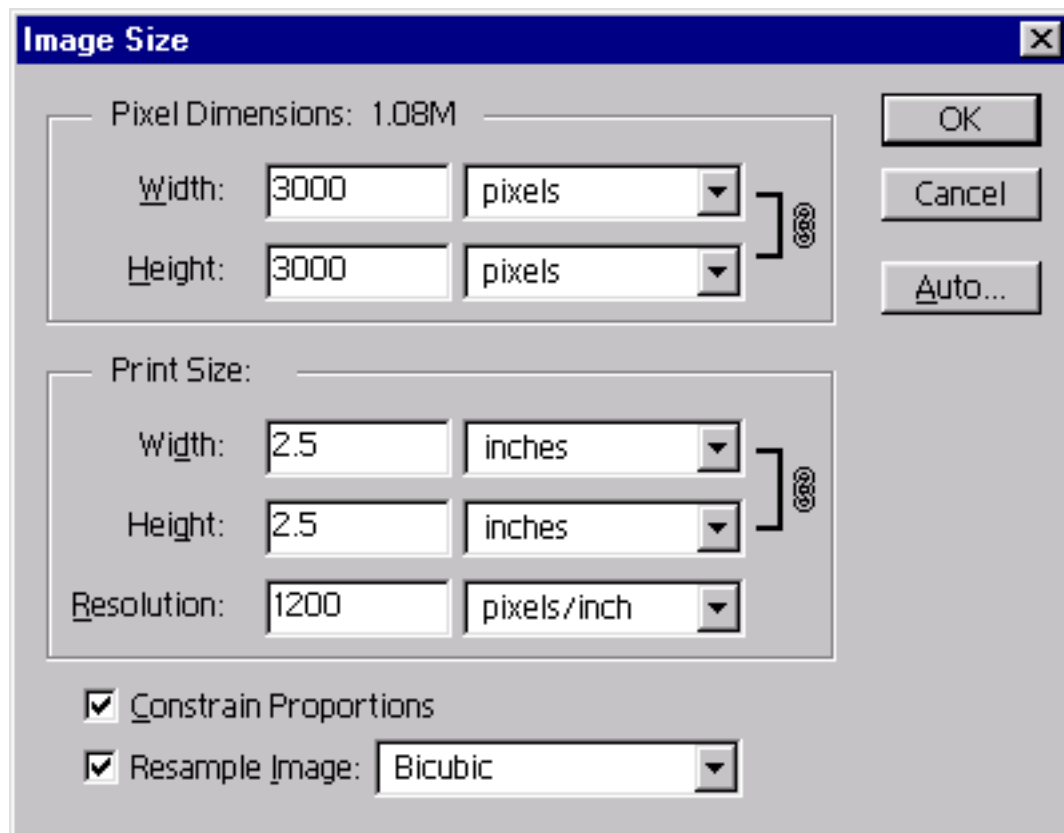


**6. Set the dialog box for TIFF Options as shown below:**

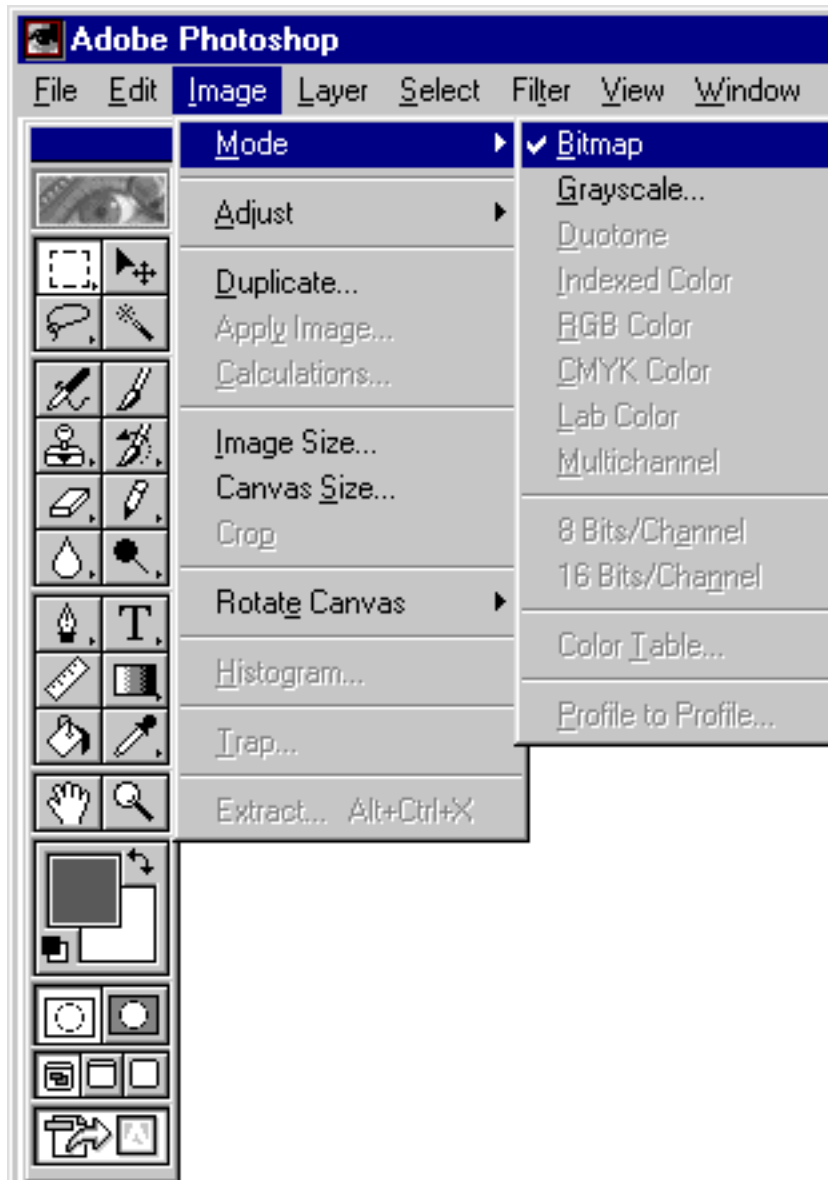


## Saving Monochrome Figures

1. **Open the scanned graphic in Photoshop.**
2. **Verify that the resolution is correct (Image -> Image Size).** For monochrome figures the resolution should be 1200 ppi (pixels per inch).

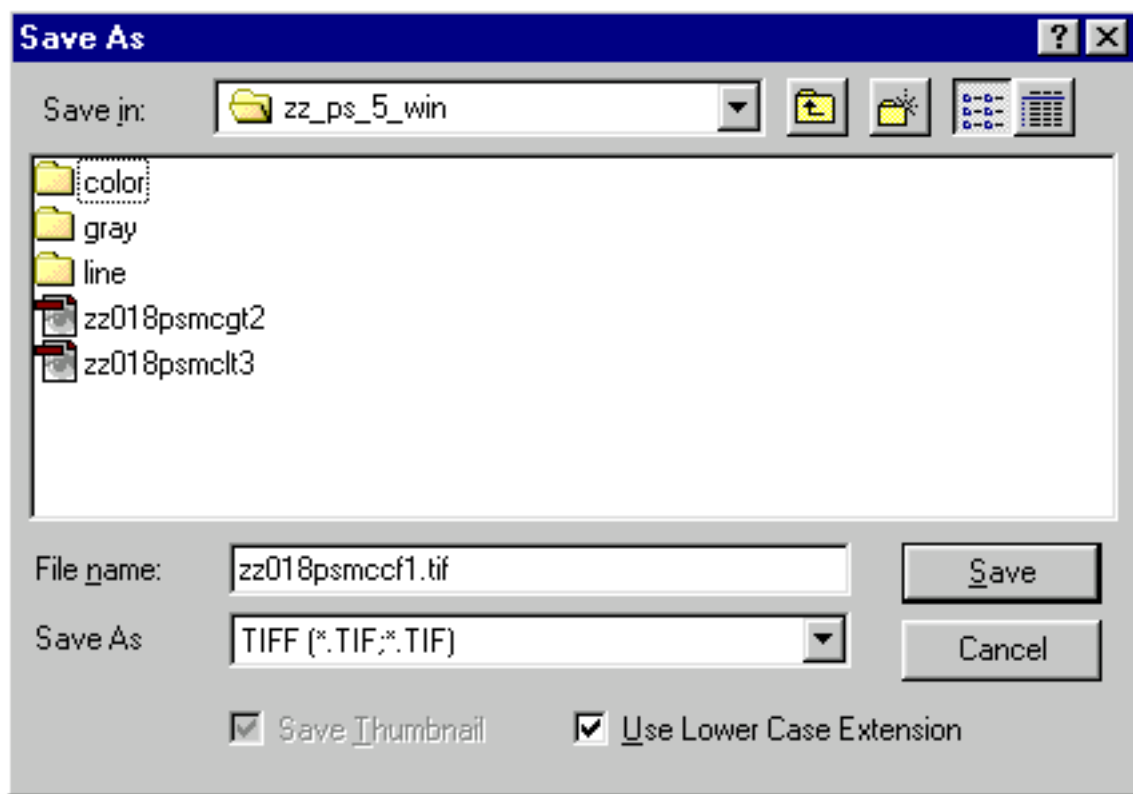


- 3. Verify that the mode is correct (Image -> Mode).** For monochrome figures the mode should be **Bitmap**.

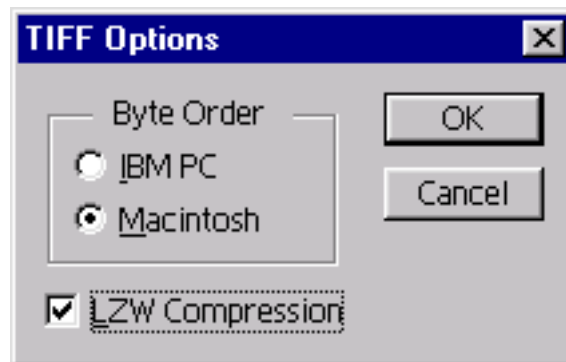


- 4. Do all cropping, tooling, and editing.** Make sure all images are cropped closely, cleaned, and that you have removed dust, scratches, and tape marks. Print out a laser proof of the figure and check it over before sending it to CPC.

**5. Save the files using the Save As command (File -> Save As). Format: TIFF**



**6. Set the dialog box for TIFF Options as shown below:**



Please refer any additional questions to this e-mail address: [digitalart@cadmus.com](mailto:digitalart@cadmus.com)  
or visit our website to find instructions on another application.  
Web address: <http://cjs.cadmus.com/da/>