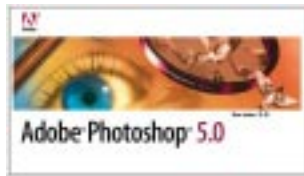


INSTRUCTIONS

- 1 [Saving Color Figures](#)
- 2 [Saving Grayscale Figures](#)
- 3 [Saving Monochrome Figures](#)

Digital Art



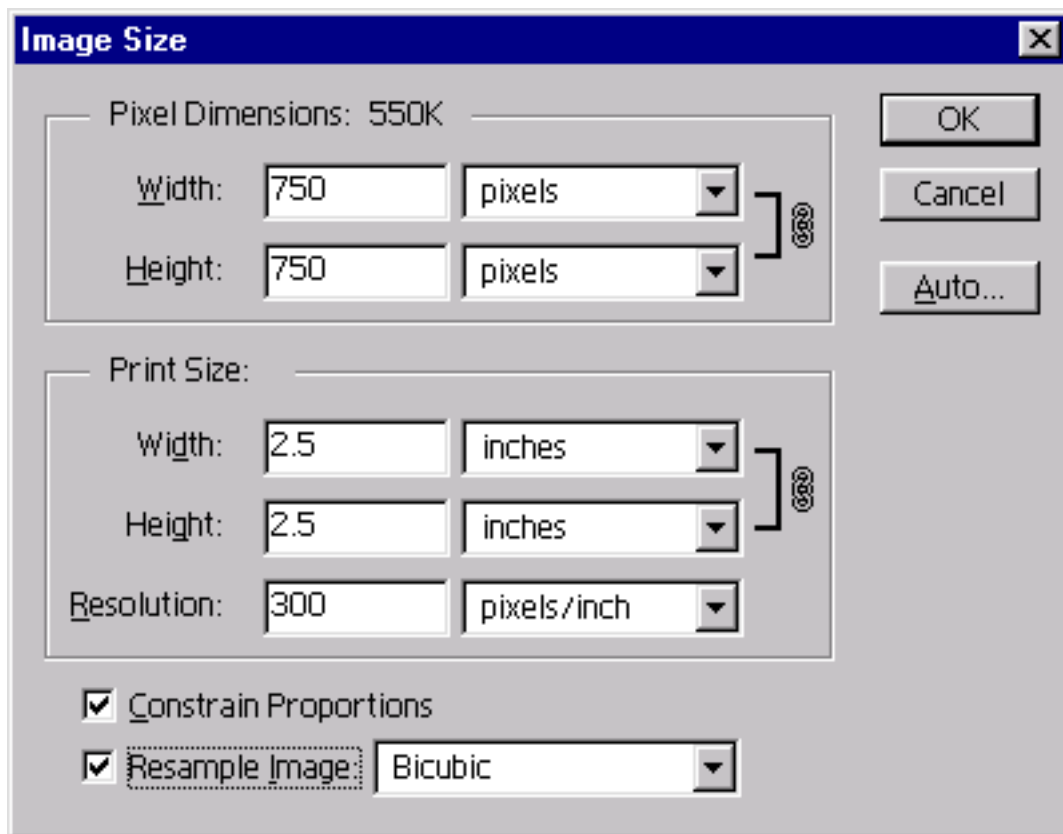
Instructions for Preparing Digital Artwork
for Submission to CPC using
Adobe Photoshop 5.0 for Windows

PLEASE NOTE

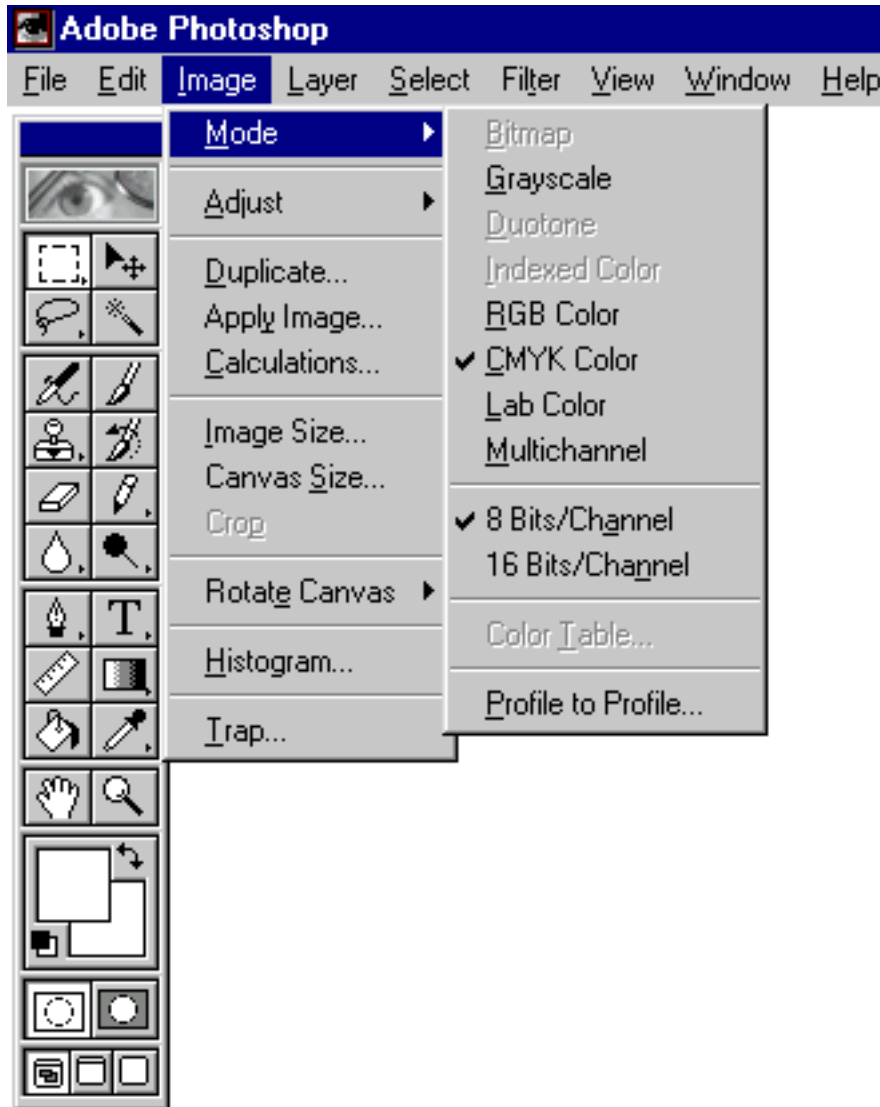
When creating graphics in image editing programs such as *Adobe Photoshop* with the intention of outputting to an imagesetter or platesetter, it is extremely important that the person creating the illustration have a thorough understanding of the details of imaging in a prepress environment. The more complicated your illustration becomes, the greater the probability of problems at output, and therefore the need for more expertise and experience in creating the files.

Saving Color Figures

1. **Open the scanned graphic in Photoshop.**
2. **Verify that the resolution is correct (Image -> Image Size).** For color figures the resolution should be between 269 and 320 ppi (pixels per inch).

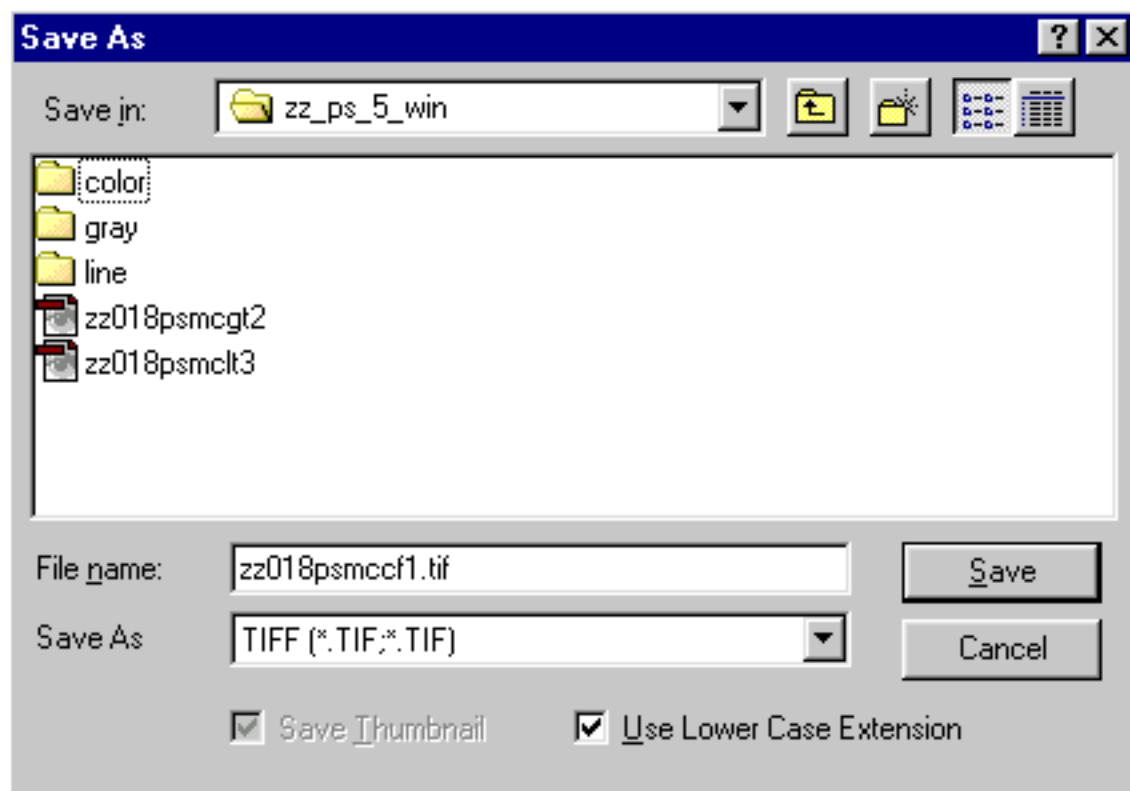


3. Verify that the mode is correct (Image -> Mode). For color figures the mode should be CMYK.

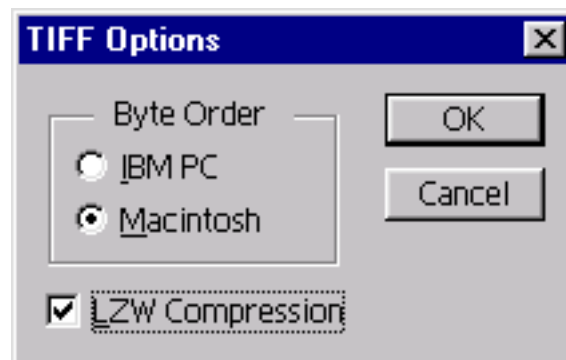


4. Do all cropping, tooling, and editing. Make sure all images are cropped closely (i.e., no excess "white space"), cleaned, and that you have removed dust, scratches, and tape marks. Print out a laser proof (or color proof if possible) of the figure and check it over before sending it to CPC.

5. Save the files using the Save As command (File -> Save As). Format: TIFF

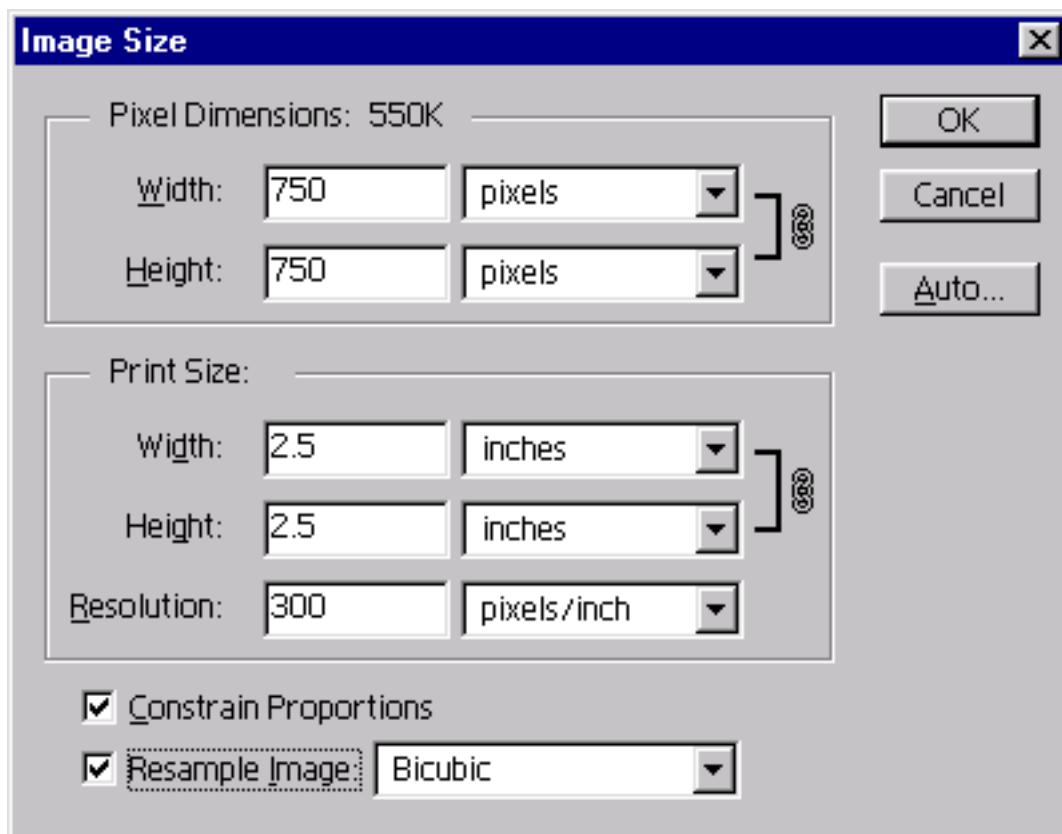


6. Set the dialog box for TIFF Options as shown below:

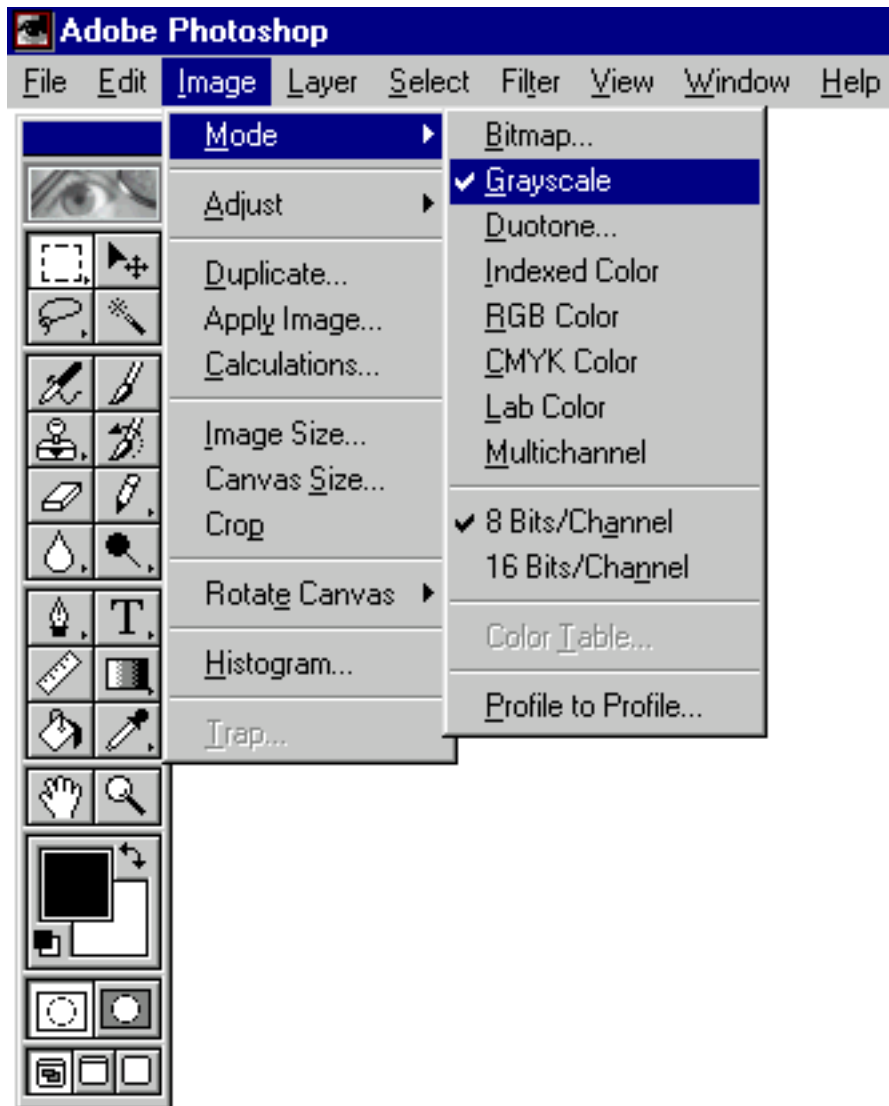


Saving Grayscale Figures

- 1. Open the scanned graphic in Photoshop.**
- 2. Verify that the resolution is correct (Image -> Image Size).** For grayscale figures the resolution should be **300 ppi** (pixels per inch). Grayscale figures with halftone images and type are considered to be **combination halftones**. If you plan to add type to your halftone scan using Photoshop, the resolution should be **600 ppi** (pixels per inch).

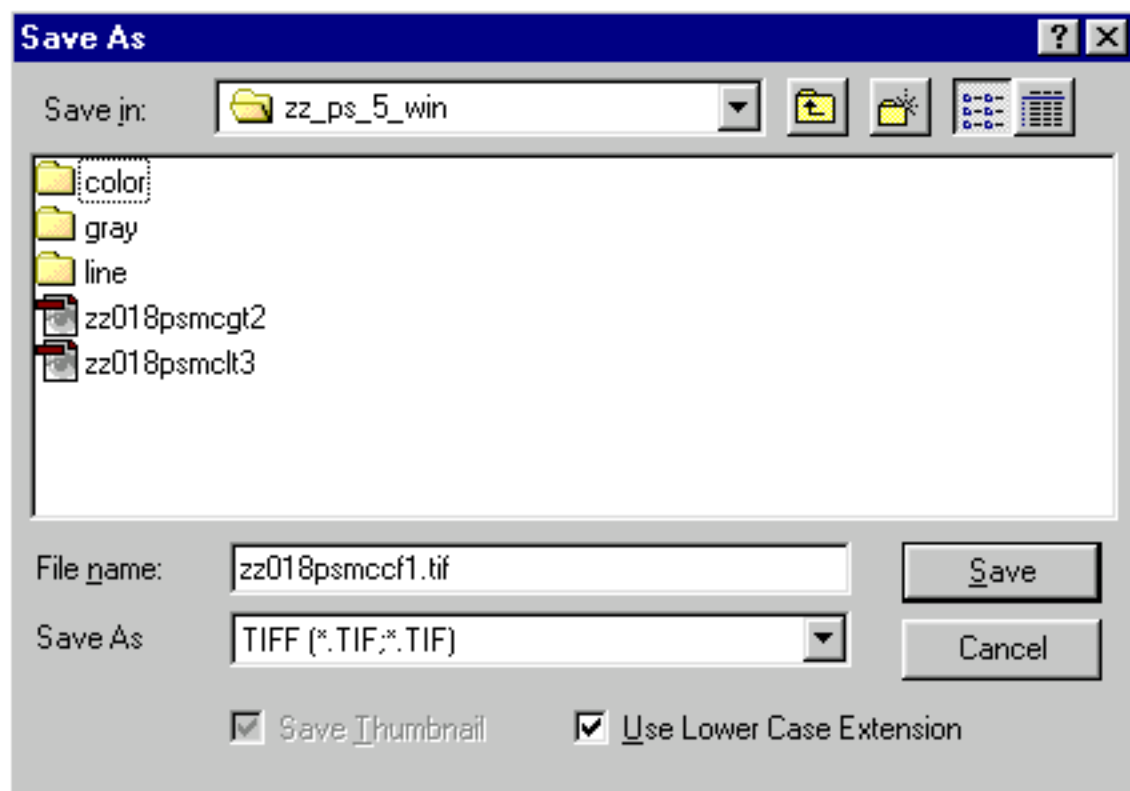


- 3. Verify that the mode is correct (Image -> Mode).** For grayscale figures the mode should be **Grayscale**.

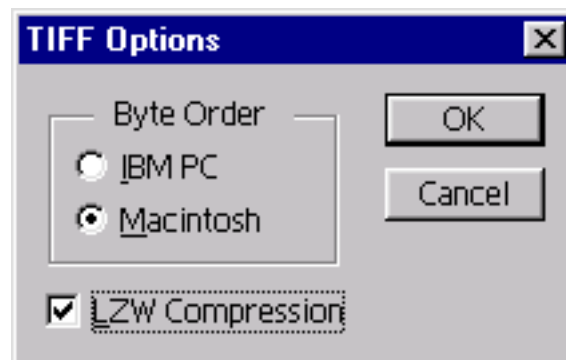


- 4. Do all cropping, tooling, and editing.** Make sure all images are cropped closely, cleaned, and that you have removed dust, scratches, and tape marks. Print out a laser proof of the figure and check it over before sending it to CPC.

5. Save the files using the Save As command (File -> Save As). Format: TIFF

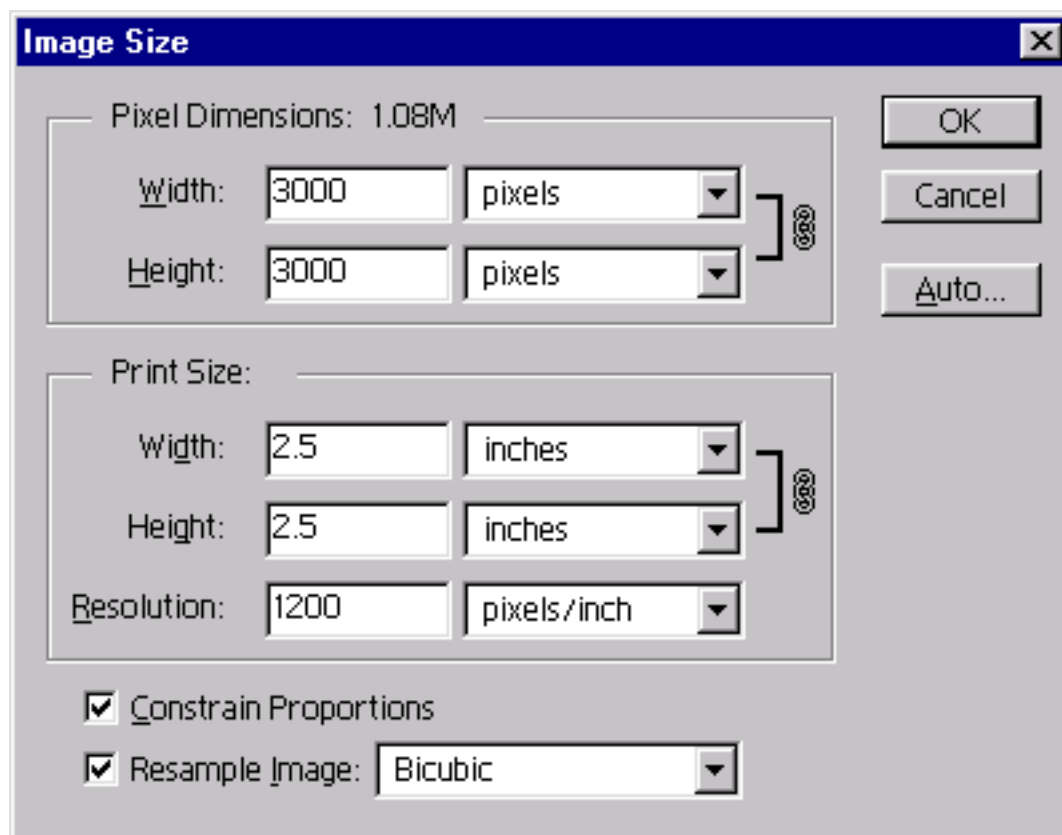


6. Set the dialog box for TIFF Options as shown below:

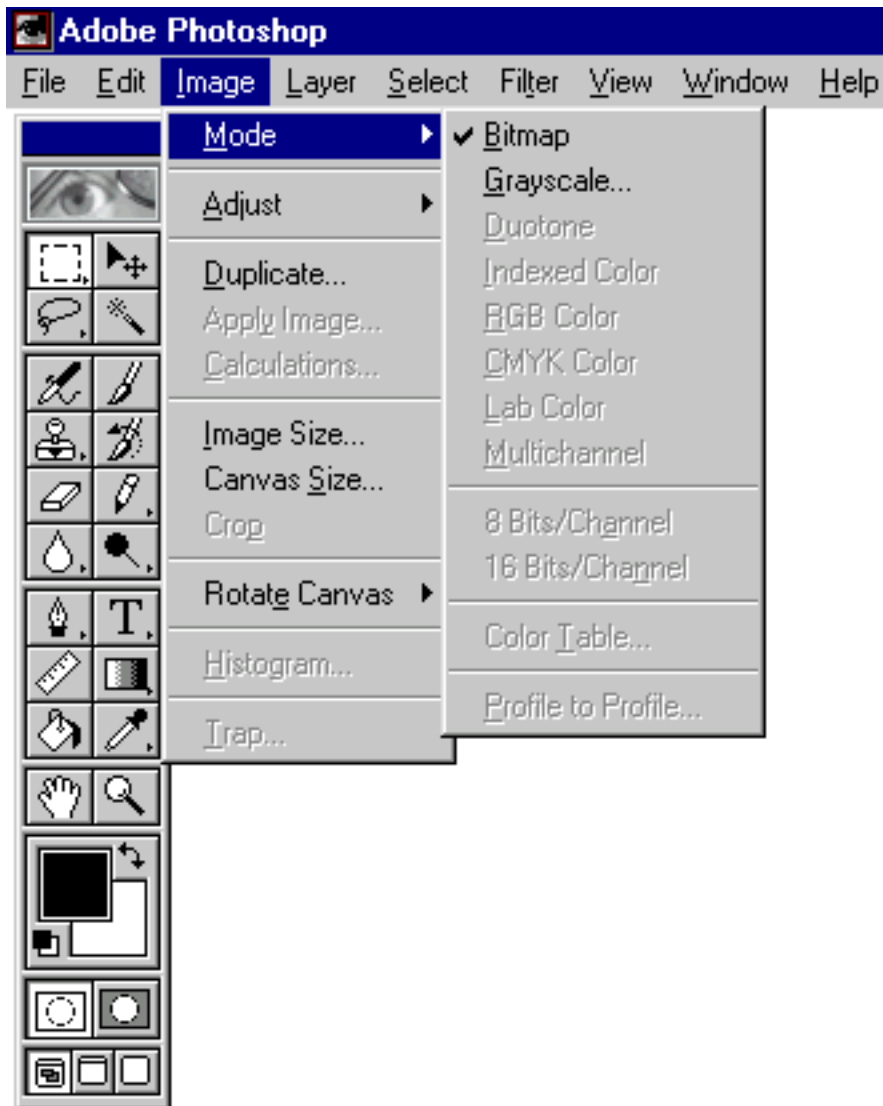


Saving Monochrome Figures

1. **Open the scanned graphic in Photoshop.**
2. **Verify that the resolution is correct (Image -> Image Size).** For monochrome figures the resolution should be 1200 ppi (pixels per inch).

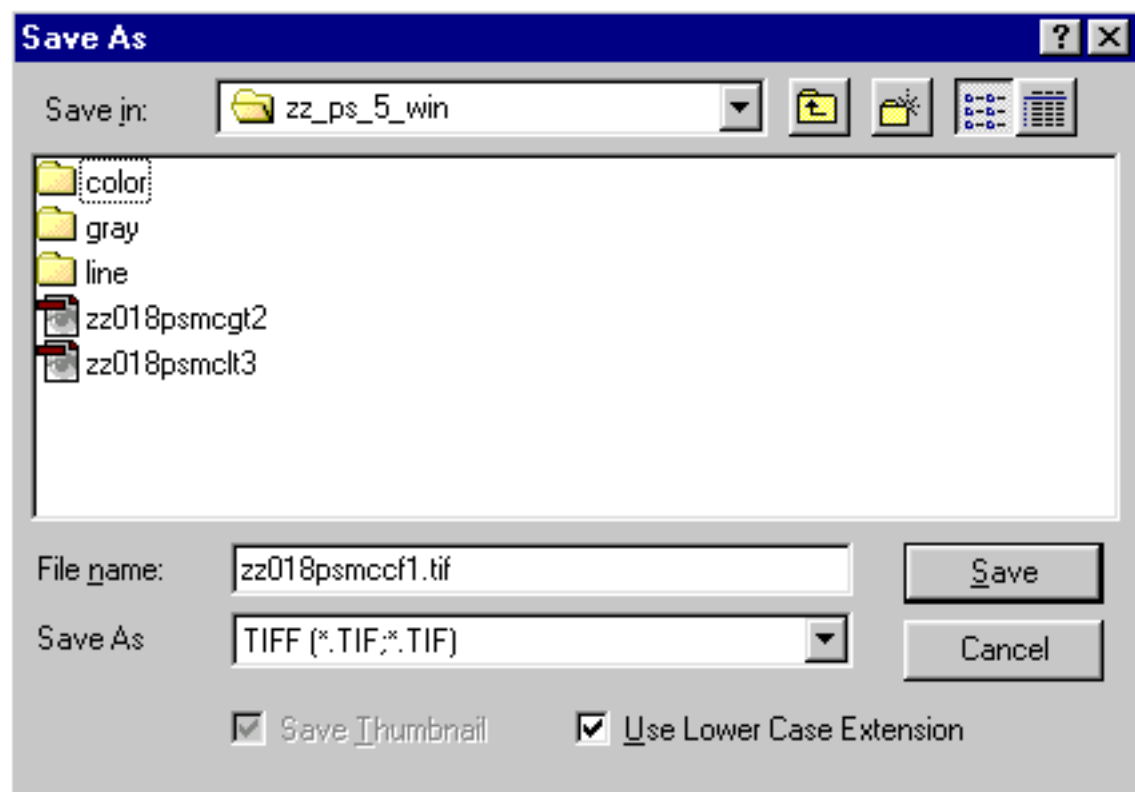


- 3. Verify that the mode is correct (Image -> Mode).** For monochrome figures the mode should be **Bitmap**.

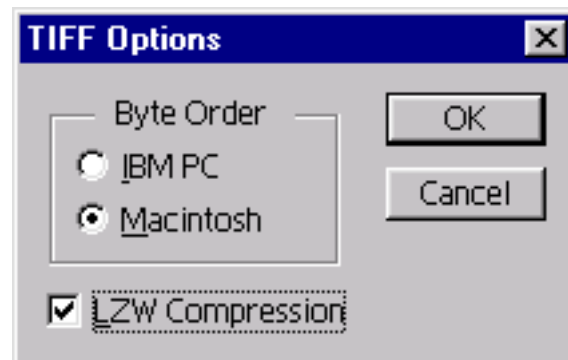


- 4. Do all cropping, tooling, and editing.** Make sure all images are cropped closely, cleaned, and that you have removed dust, scratches, and tape marks. Print out a laser proof of the figure and check it over before sending it to CPC.

5. Save the files using the Save As command (File -> Save As). Format: TIFF



6. Set the dialog box for TIFF Options as shown below:



Please refer any additional questions to this e-mail address: digitalart@cadmus.com
or visit our website to find instructions on another application.
Web address: <http://cjs.cadmus.com/da/>