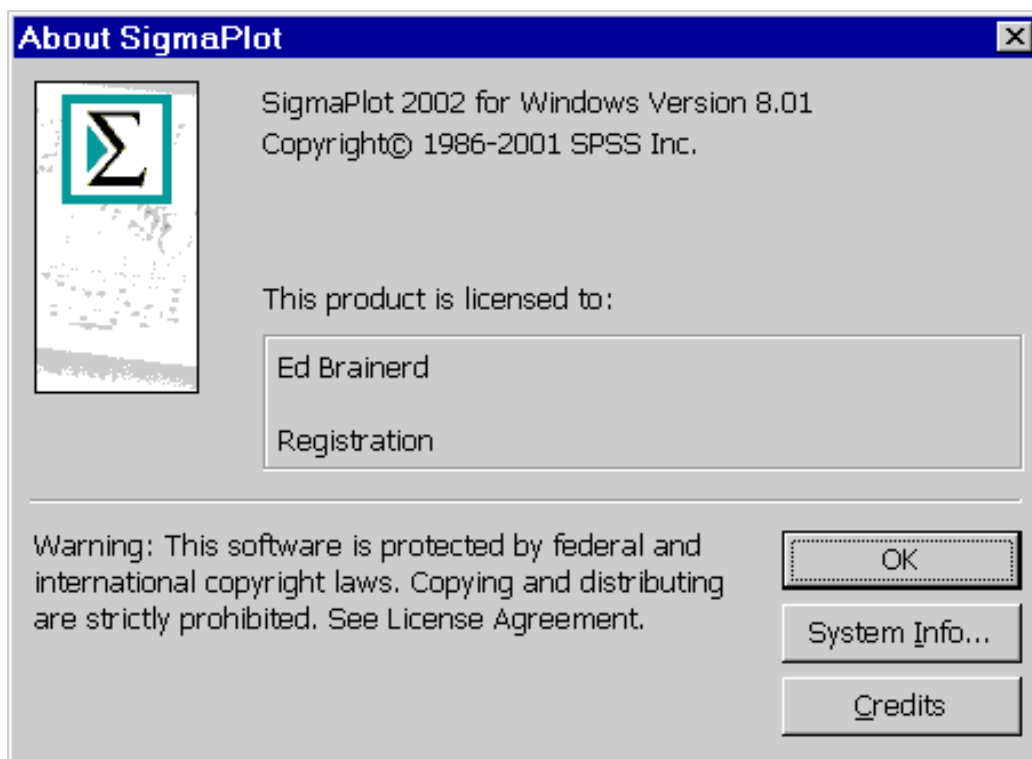




Preparing Digital Artwork for Cadmus Professional Communications with

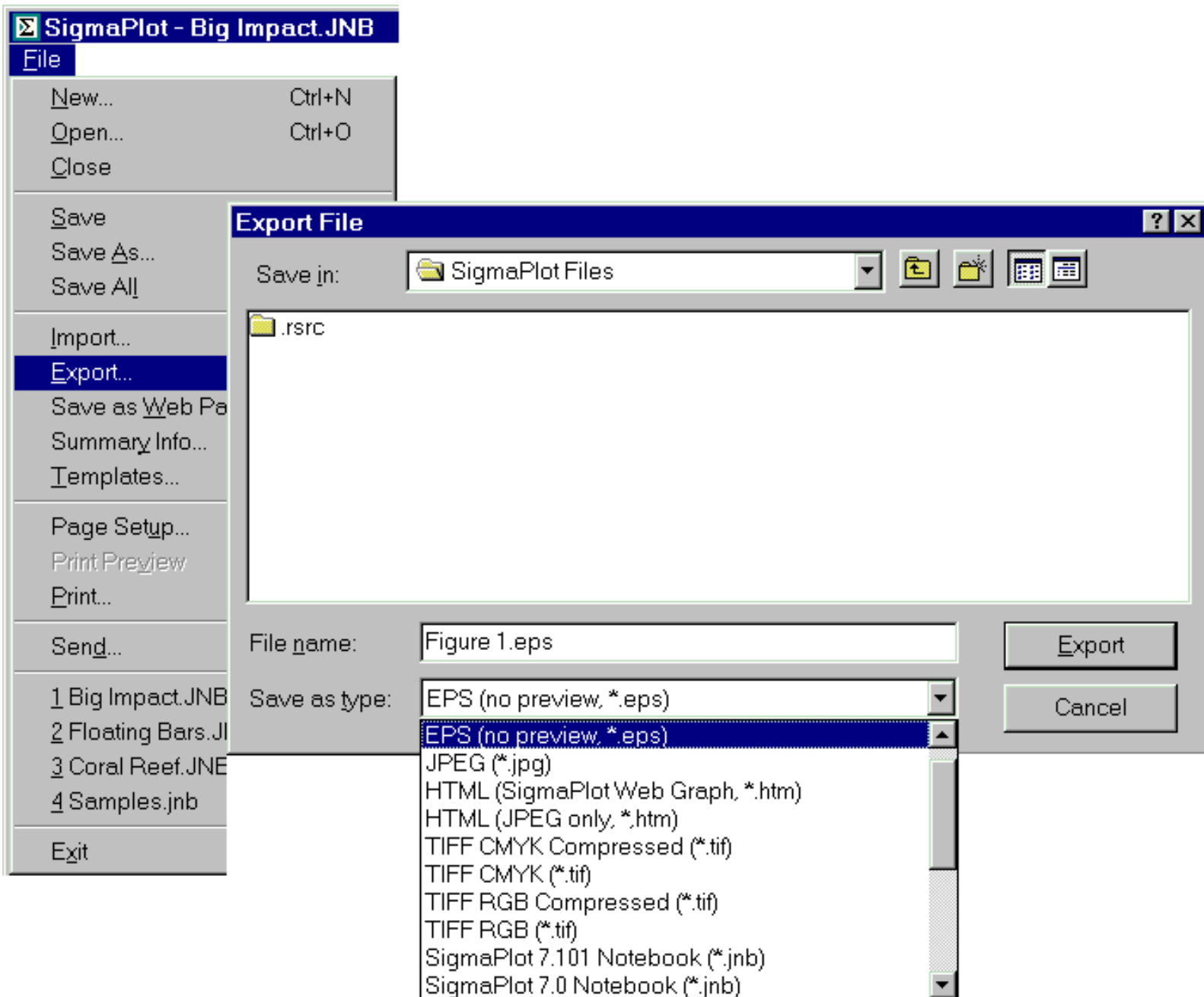


SigmaPlot 8.01 for Windows

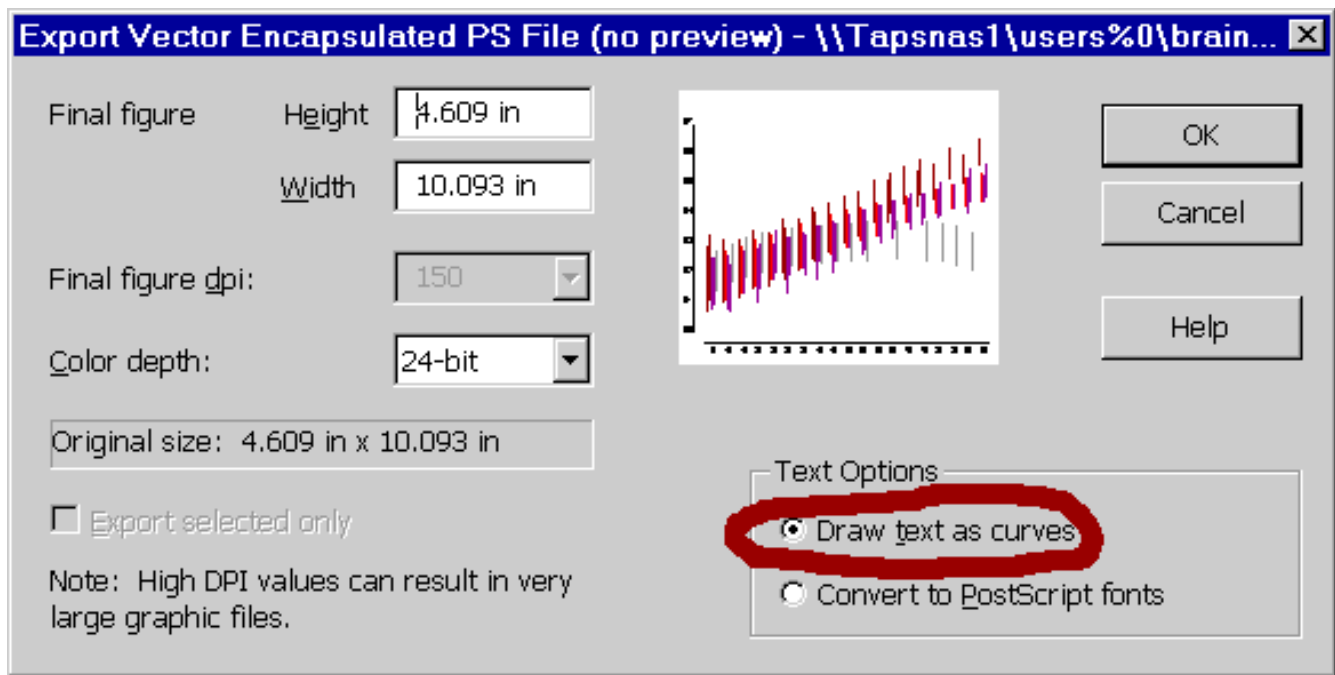
PLEASE NOTE: The important issue in using graphics from **SigmaPlot** for quality printing is the file type chosen to **Export the file**.

Export the File as an **EPS (no preview, *.eps)**. This will produce a true vector CMYK EPS file.

1) From the **File** menu, select **Export**. This will bring up the **Export File** window.



2) Then for the **Save as Type:** select **EPS (no preview, *.eps)**, name the file and **Click** on **Export**. This will bring up the Export Vector Encapsulated PS File (no preview) settings window.



The Color depth setting refers to the TIFF preview. Since this is an EPS (no preview) File, it is not relevant.

3) Choose the Text Option "Draw text as curves". and **Click** on OK.



All trademarks mentioned here belong to their respective owners.
Mention or inclusion of products herein is for informational purposes only.

[Home](#) | [Guidelines](#) | [How to](#) | [Resources](#) | [Glossary](#) | [FAQs](#) | [What's New](#)

[Send CPC feedback.](#)



Copyright © 2001
Cadmus Professional Communications.
All Rights Reserved.