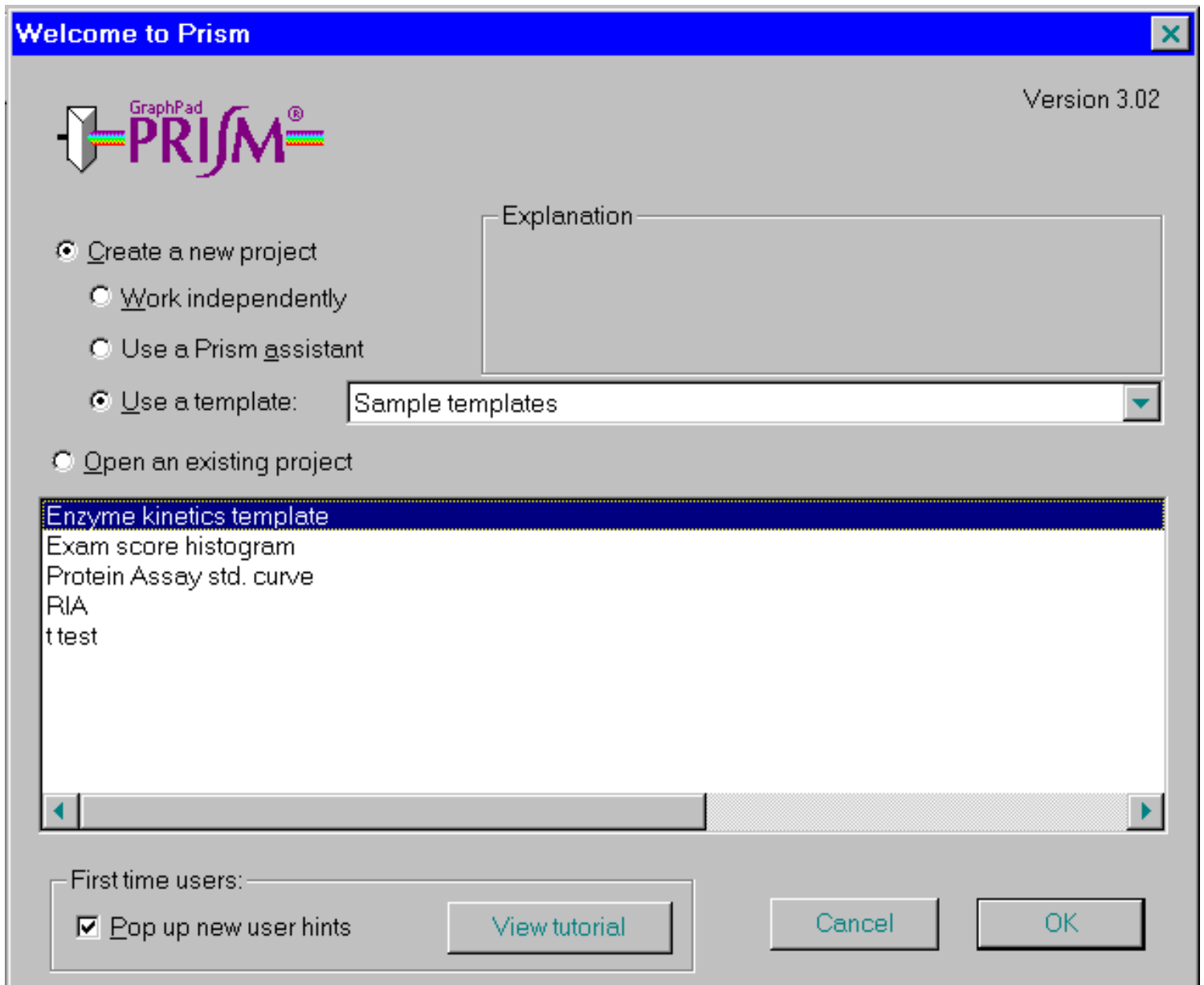


Preparing Digital Artwork for Cadmus Professional Communications with



GraphPad Prism 3.0 for Windows

PLEASE NOTE: When creating graphics in image creating programs such as **GraphPad Prism** for outputting to an imagesetter or platesetter, it is extremely important that the person creating the graphic have a thorough understanding of the details of imaging in a prepress environment. The more complicated your graphic becomes, the greater the probability of problems at output, and therefore the need for more expertise and experience in creating the files.

[Preparing the Graph as DigitalArt](#)

[Selecting the Color Scheme](#)

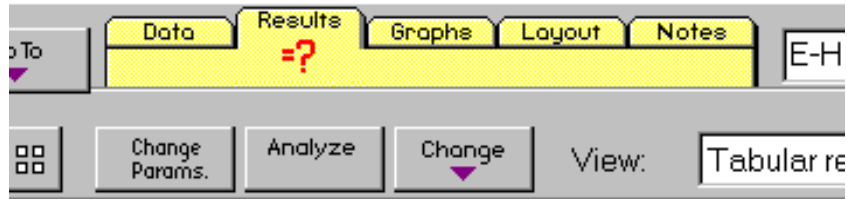
[Exporting the Graph as TIFF](#)

Preparing the Graph as Digital Art.

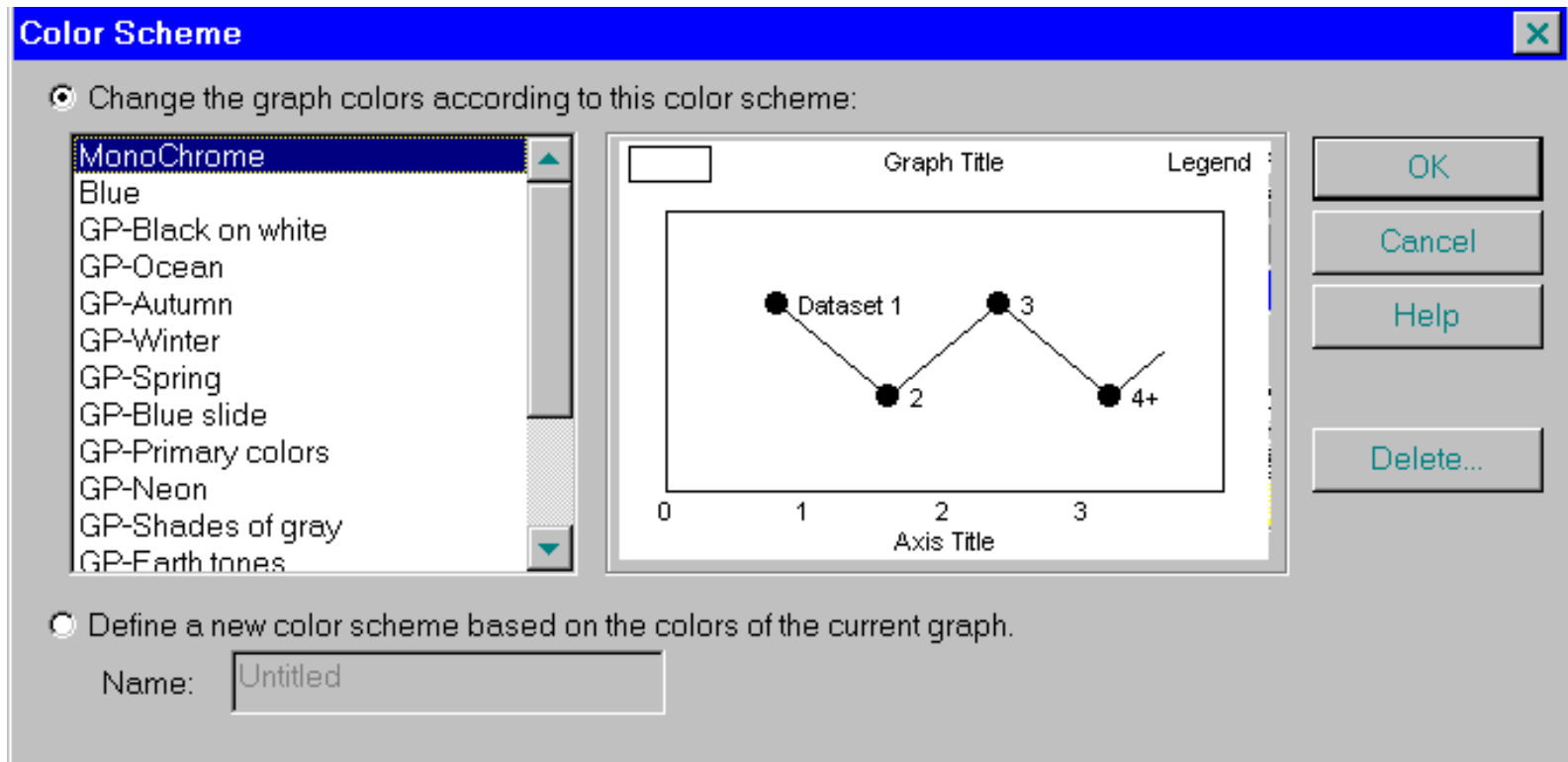
Make sure the entire figure is the size stipulated by the Journal.

Selecting the Color Scheme

1. On the Graph menu, click on Change and then Select Color Schemes.

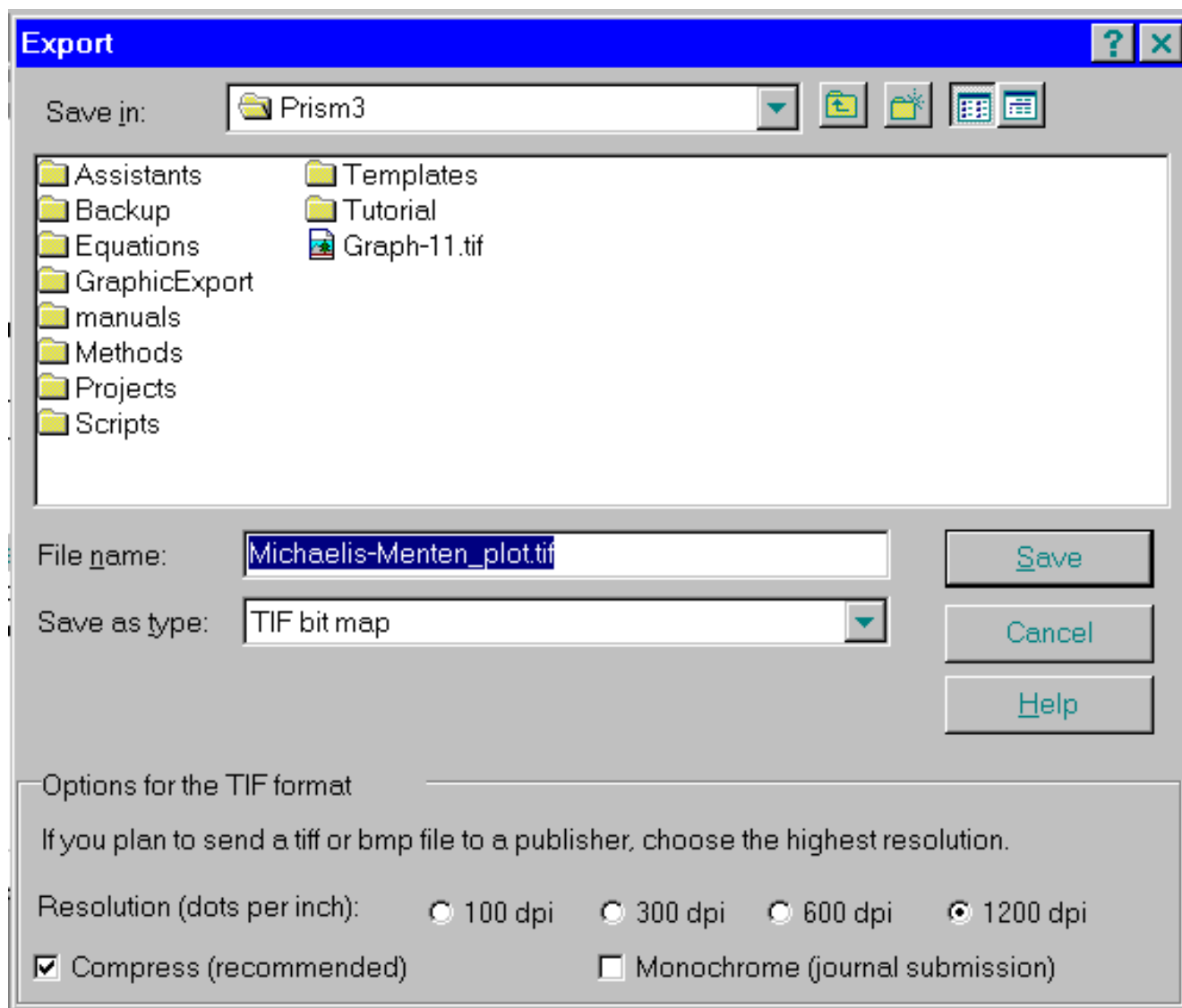


2. There are 3 acceptable Color Schemes: MonoChrome, GP-Black on White and GP-Shades of gray. In other words, don't use Color.



Export the Graph as a TIFF file.

1. From the File Menu, Select Export. Choose **1200 dpi** and **Compression**. Do NOT select **Monochrome**. If you have used Shades of gray, this overrides that and outputs solid black, if you have not, it doesn't make any difference. So to be on the safe side, don't select it.



Click on Save.

All trademarks mentioned here belong to their respective owners.
Mention or inclusion of products herein is for informational purposes only.

Copyright © 2000
Cadmus Professional Communications.
All rights reserved.